



Price
£375,000

Freehold

2x  1x  1x 

**Gallwey Avenue,
Birchington, Kent, CT7**

OVER 60?

You could get up to
59% off the price!*

Wards
Helping you move forwards



Main features

- Lovely home in sought after area
- Garage & off road parking
- Generous size rear garden
- Situated in a quiet cul-de-sac close to Birchington Village
- Within walking distance to Minnis Bay coastline and local shops

Accommodation

GROUND FLOOR

Entrance Hallway

Lounge: 13'10 x 11'11 (4.22m x 3.63m)

Conservatory

Bedroom 2: 10'10 x 7'11 (3.30m x 2.41m)

Bedroom 1: 13'3 x 11'4 (4.04m x 3.46m)

Bathroom

Kitchen: 11'10 x 7'11 (3.61m x 2.41m)

Lobby: 5'5 x 2'10 (1.65m x 0.86m)

OUTSIDE

Front Garden

Garage & Driveway

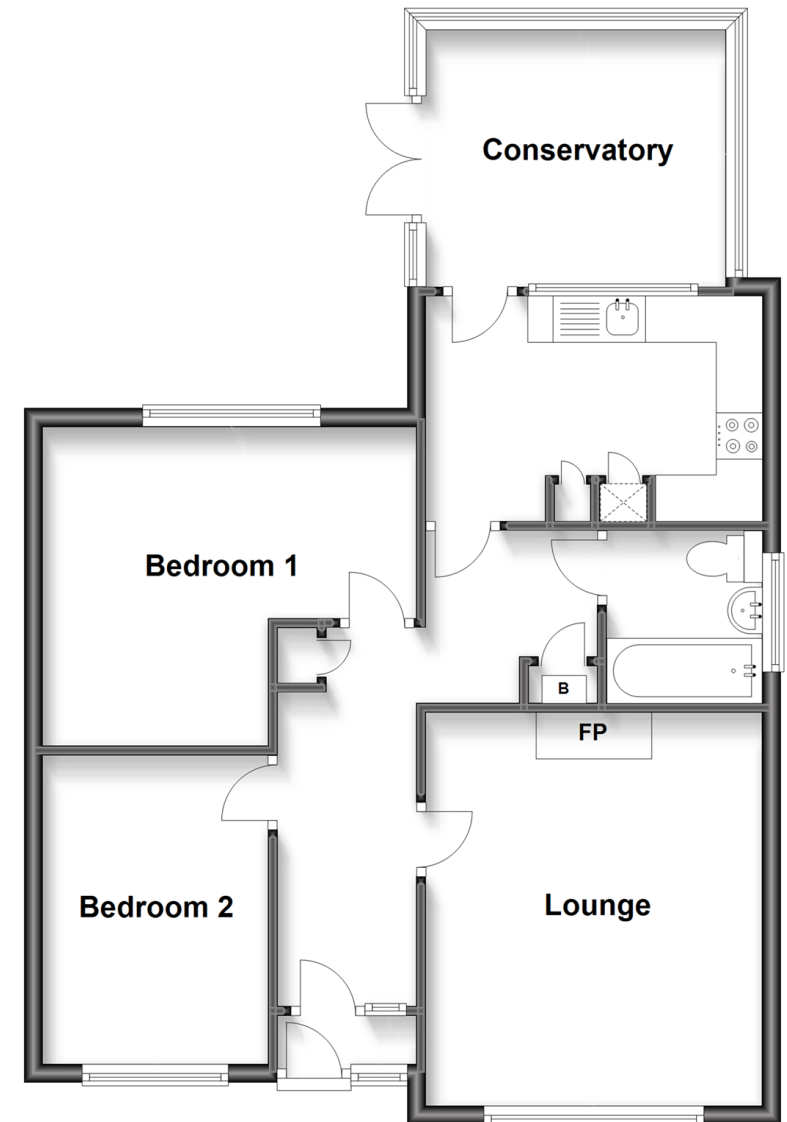
Rear Garden

Call Birchington - 01843 842551 ■ wardsofkent.co.uk

- A private rental licensing scheme applies to some properties in this area, please contact us before proceeding
- Legal advice should be taken to verify fixtures/fittings, planning, alterations and/or lease details
- Appliances & services are untested, dimensions are approximate and floor plans are not to scale
- Our Homewise partnership offer a 'Home for Life' plan to buyers over 60, granting a lifetime lease for your protection and reducing the purchase price by up to 59%

Ground Floor

Approx. 69.3 sq. metres (745.8 sq. feet)



10126349/20220810/VR/DF