



Price
£330,000

Leasehold

2x  1x  1x 

**McKinlay Court, The
Parade, Birchington,
Kent, CT7**

OVER 60?

Secure this property
for up to **59% less!**

Wards
Helping you move forwards



Main features

- Beautiful apartment with beautiful sea views
- Garage
- Situated on the fifth floor, which is at the top of the building
- Close to local amenities such as bus routes, shops, and beach
- Amazing sunsets to be seen in the evening

Accommodation

FIFTH FLOOR

Entrance Hall

Lounge: 19'6 x 13'7 (5.95m x 4.14m)

Kitchen: 9'11 x 7'1 (3.02m x 2.16m)

Bedroom 1: 12'3 x 9'8 (3.74m x 2.95m)

Bedroom 2: 11'0 x 9'8 (3.36m x 2.95m)

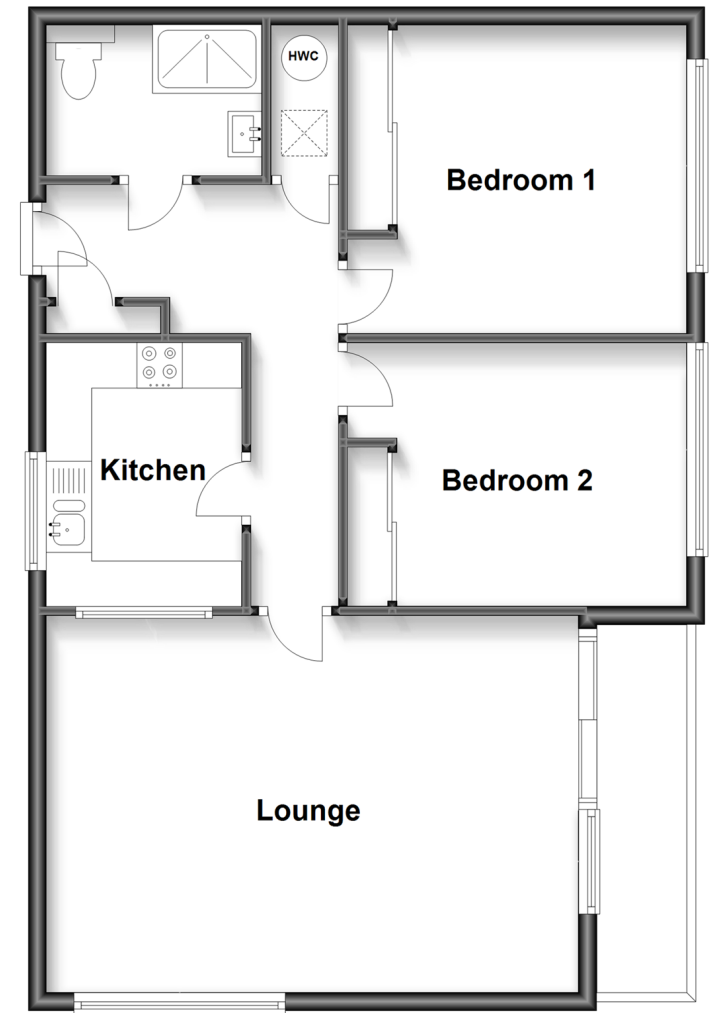
Shower Room: 7'11 x 5'4 (2.41m x 1.63m)

OUTSIDE

Garage

Fifth Floor

Approx. 69.9 sq. metres (752.8 sq. feet)



Call Birchington - 01843 842551 ■ wardsofkent.co.uk

- A private rental licensing scheme applies to some properties in this area, please contact us before proceeding
- Legal advice should be taken to verify fixtures/fittings, planning, alterations and/or lease details
- Appliances & services are untested, dimensions are approximate and floor plans are not to scale
- Through a Homewise Home For Life Plan people aged 60+ can secure this property for up to 59% less, by purchasing a Lifetime Lease.



10126758/20230628/DL/DS