



Price
£700,000

Freehold

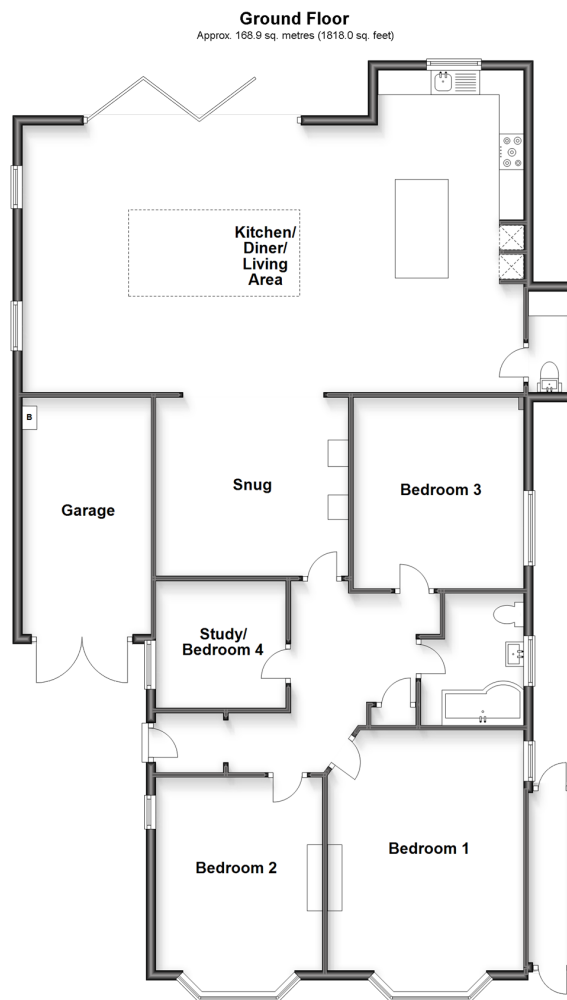
4x  1x  2x 

**Edmanson Avenue,
Margate, Kent, CT9**

OVER 60?

You could get up to
59% off the price!*

Wards
Helping you move forwards



Accommodation

GROUND FLOOR

Hallway

Kitchen/Diner/Living Area: 33'10 x 17'10 (10.32m x 5.44m)

Toilet: 6'9 x 2'10 (2.06m x 0.86m)

Snug: 11'11 x 11'7 (3.63m x 3.53m)

Bedroom 1: 16'0 x 13'2 (4.88m x 4.02m)

Bedroom 2: 12'11 x 10'1 (3.94m x 3.08m)

Bedroom 3: 12'10 x 11'4 (3.91m x 3.46m)

Study/Bedroom 4: 8'11 x 8'6 (2.72m x 2.59m)

Bathroom: 8'8 x 6'6 (2.64m x 1.98m)

OUTSIDE

Rear Garden

Front Garden

Off Road Parking

Garage



Main features

- Generously proportioned extended and refurbished family home
- Open plan living ideal for modern family life
- Within walking distance to the coastline at Westbrook
- Garage and off street parking
- Viewings are highly recommended



Nearest Schools

Primary Schools: St Saviour's C of E Junior School 1.1 miles, Garlinge Primary and Nursery 1.4 miles, St Gregory's Catholic Primary, Margate 1.7 miles

Secondary Schools: Hartsdown Technology College 1.2



Transport Information

Train Stations: Westgate-on-Sea 0.7 miles, Margate 1.4 miles, Birchington-On-Sea 2.5 miles



Address

Edmanson Avenue, Margate, Kent, CT9



Directions

For directions to this property please contact us.



Wards
Helping you move forwards

Call Birchington Branch 01843 842551 ■ wardsofkent.co.uk



- A private rental licensing scheme applies to some properties in this area, please contact us before proceeding
- Appliances & services are untested, dimensions are approximate and floor plans are not to scale

- Legal advice should be taken to verify fixtures/fittings, planning, alterations and/or lease details
- Our Homewise partnership offer a 'Home for Life' plan to buyers over 60, granting a lifetime lease for your protection and reducing the purchase price by up to 59%



10128125/20221014/VR/NW