



OVER 60?

Secure this property
for up to **59% less!**

Price
£450,000

Freehold

7x  1x  1x 

**Queens Road,
Westgate-On-Sea, Kent,
CT8**

Wards
Helping you move forwards



Main features

- An extremely impressive family home
- Period features with contemporary style
- Offers versatile living
- Perfect for a growing family
- Situated in a brilliant location, close to local amenities, bus routes and the sea

Accommodation

GROUND FLOOR

Porch
Entrance Hall
Lounge: 11'10 x 10'10 (3.61m x 3.30m)
Kitchen/Diner: 17'7 x 11'11 (5.36m x 3.63m)

FIRST FLOOR

Landing
Bedroom 5: 8'6 x 7'8 (2.59m x 2.34m)
Bedroom 2: 12'4 x 9'8 (3.76m x 2.95m)
Bedroom 1: 12'3 x 10'11 (3.74m x 3.33m)
Bathroom: 6'5 x 6'0 (1.96m x 1.83m)

SECOND FLOOR

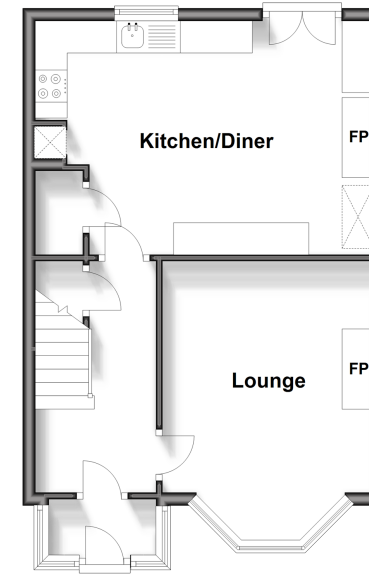
Landing
Bedroom 6: 7'7 x 7'7 (2.31m x 2.31m)
Bedroom 4: 12'3 x 9'10 (3.74m x 3.00m)
Bedroom 3: 12'5 x 9'8 (3.79m x 2.95m)
Bedroom 7: 8'5 x 7'6 (2.57m x 2.29m)

OUTSIDE

Garden to Rear

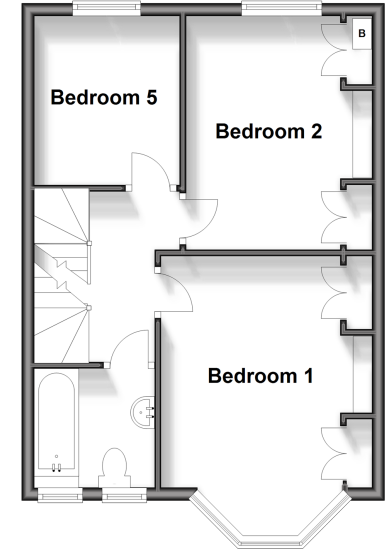
Ground Floor

Approx. 41.1 sq. metres (441.9 sq. feet)



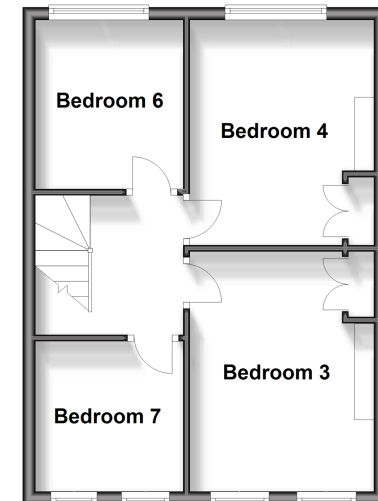
First Floor

Approx. 39.4 sq. metres (424.2 sq. feet)



Second Floor

Approx. 39.1 sq. metres (420.8 sq. feet)



Call Birchington - 01843 842551 ■ wardsofkent.co.uk

- A private rental licensing scheme applies to some properties in this area, please contact us before proceeding
- Legal advice should be taken to verify fixtures/fittings, planning, alterations and/or lease details
- Appliances & services are untested, dimensions are approximate and floor plans are not to scale
- Through a Homewise Home For Life Plan people aged 60+ can secure this property for up to 59% less, by purchasing a Lifetime Lease.



10129027/20240415/DL/DS