



Guide Price
£325,000

Freehold

3x  1x  2x 

**Seamark Close,
Monkton, Ramsgate,
Kent, CT12**

OVER 60?

Secure this property
for up to **59% less!**

Wards
Helping you move forwards



Main features

- The perfect first time buy or family home
- Chain free
- The most beautiful views from the back windows
- In need of modernisation
- Situated in the popular, quiet area of Monkton

Accommodation

GROUND FLOOR

Entrance Hall

Kitchen: 11'9 x 8'6 (3.58m x 2.59m)

Dining Room: 9'8 x 8'8 (2.95m x 2.64m)

Lounge: 15'8 x 9'9 (4.78m x 2.97m)

Garage

FIRST FLOOR

Landing

Bedroom 1: 12'5 x 9'6 (3.79m x 2.90m)

Bedroom 2: 8'1 x 7'10 (2.47m x 2.39m)

Bedroom 3: 11'1 x 7'11 (3.38m x 2.41m)

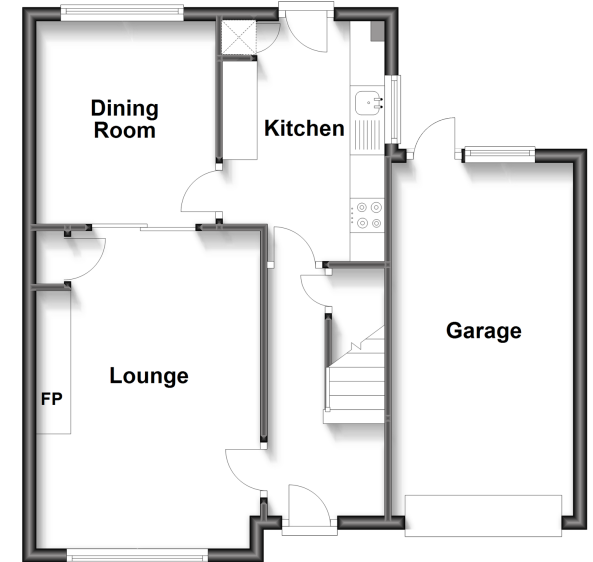
Bathroom

OUTSIDE

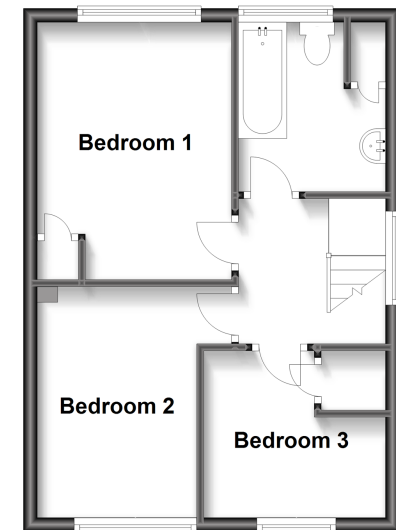
Rear Garden

Off Road Parking

Ground Floor
Approx. 51.4 sq. metres (553.7 sq. feet)



First Floor
Approx. 36.1 sq. metres (388.1 sq. feet)



Call Birchington - 01843 842551 ■ wardsofkent.co.uk

- A private rental licensing scheme applies to some properties in this area, please contact us before proceeding
- Legal advice should be taken to verify fixtures/fittings, planning, alterations and/or lease details
- Appliances & services are untested, dimensions are approximate and floor plans are not to scale
- Through a Homewise Home For Life Plan people aged 60+ can secure this property for up to 59% less, by purchasing a Lifetime Lease.



10129065/20230109/VR/DS