



**Price**

**£210,000**

**Leasehold**

2x  1x  1x 

**Marlow House,  
Sutherland Drive,  
Birchington, Kent, CT7**

**OVER 60?**

Secure this property  
for up to **59% less!**

*Wards*  
Helping you move forwards





## Main features

- Lovely first floor apartment
- Beautifully presented throughout
- Allocated parking space
- Large spacious rooms with large double bedrooms
- Situated in a very popular location, close to local amenities, bus routes and Birchington train station

## Accommodation

### FIRST FLOOR

Hallway

Bedroom 1: 16'0 x 11'6 (4.88m x 3.51m)

Bathroom

Bedroom 2: 13'7 x 7'0 (4.14m x 2.14m)

Lounge: 13'9 x 13'3 (4.19m x 4.04m)

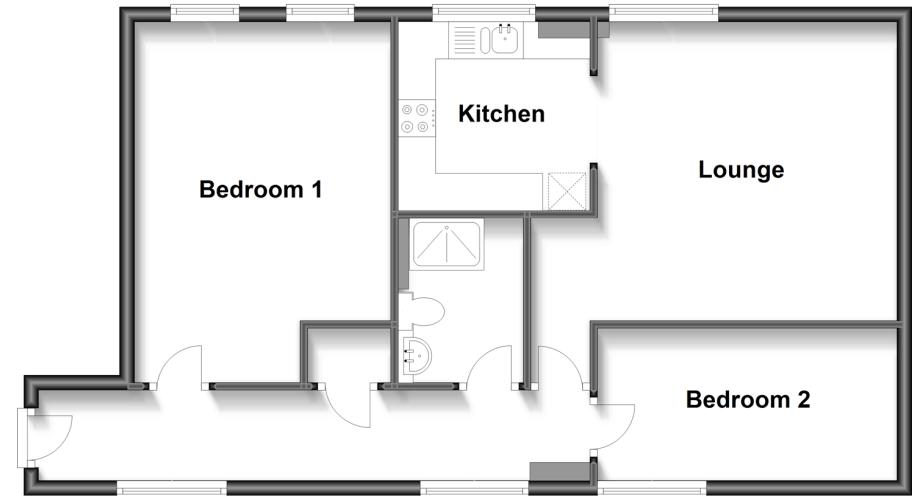
Kitchen: 8'5 x 8'1 (2.57m x 2.47m)

### OUTSIDE

Allocated Parking Space

### First Floor

Approx. 64.7 sq. metres (696.0 sq. feet)



**Call Birchington - 01843 842551 ■ [wardsofkent.co.uk](http://wardsofkent.co.uk)**

- A private rental licensing scheme applies to some properties in this area, please contact us before proceeding
- Legal advice should be taken to verify fixtures/fittings, planning, alterations and/or lease details
- Appliances & services are untested, dimensions are approximate and floor plans are not to scale
- Through a Homewise Home For Life Plan people aged 60+ can secure this property for up to 59% less, by purchasing a Lifetime Lease.



10129184/20230301/EM/DS