



**Price**  
**£144,995**

**Leasehold**

1x  1x  1x 

**Charing Crescent,  
Westgate-On-Sea, Kent,  
CT8**

**OVER 60?**

Secure this property  
for up to **59% less!**

*Wards*  
Helping you move forwards





## Main features

- Ready to move straight into
- Lovely communal garden
- First floor apartment
- Ideal first time buy or investment opportunity
- Located in Westgate-on-Sea, just a short walk to shops and local amenities

## Accommodation

### FIRST FLOOR

Entrance Hallway

Kitchen : 8'7 x 8'6 (2.62m x 2.59m)

Bathroom

Lounge : 13'6 x 9'2 (4.12m x 2.80m)

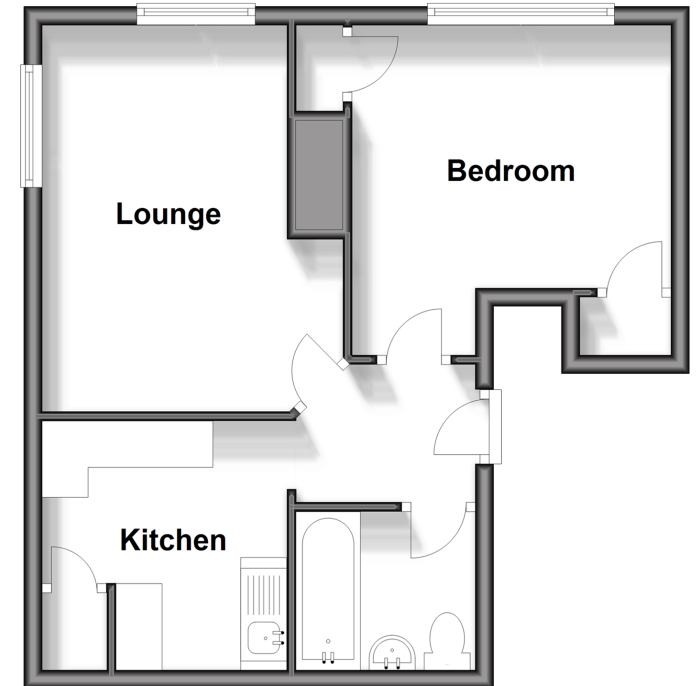
Bedroom : 11'5 x 9'1 (3.48m x 2.77m)

### OUTSIDE

Communal Garden

## First Floor

Approx. 39.5 sq. metres (424.9 sq. feet)



**Call Birchington - 01843 842551 ■ [wardsofkent.co.uk](http://wardsofkent.co.uk)**

- A private rental licensing scheme applies to some properties in this area, please contact us before proceeding
- Legal advice should be taken to verify fixtures/fittings, planning, alterations and/or lease details
- Appliances & services are untested, dimensions are approximate and floor plans are not to scale
- Through a Homewise Home For Life Plan people aged 60+ can secure this property for up to 59% less, by purchasing a Lifetime Lease.



10129320/20240426/EM/BW