



Guide Price
£300,000

Leasehold

3x  1x  1x 

**Bridger Court, Epple
Bay Avenue,
Birchington, Kent, CT7**

OVER 60?

Secure this property
for up to **59% less!**

Wards
Helping you move forwards



Main features

- Beautiful ground floor apartment
- Being sold with no onward chain
- Garage en-bloc
- Is ready for someone to move straight in and make their own
- Situated in a very popular location close to the sea, bus routes and local amenities

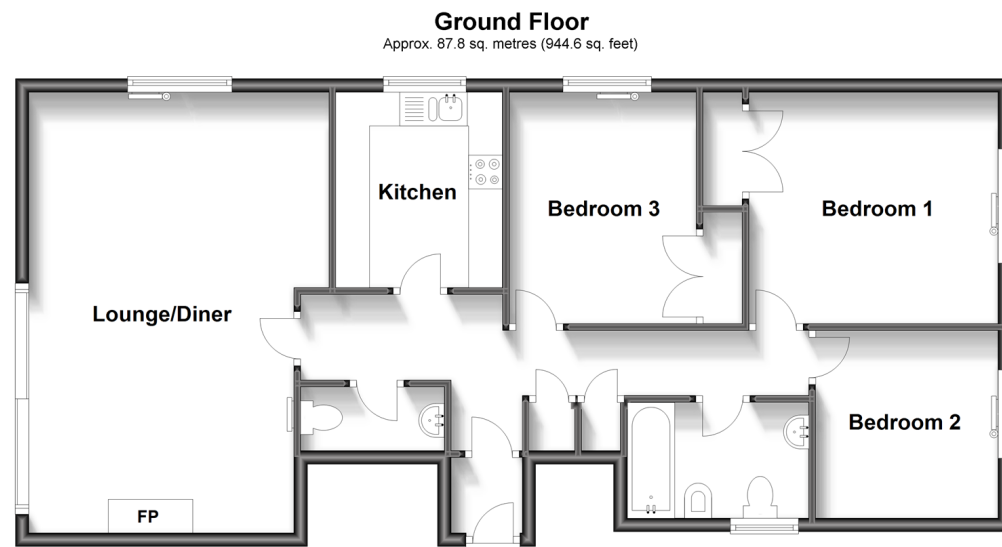
Accommodation

GROUND FLOOR

Porch
Entrance Hallway
Cloakroom
Lounge/Diner: 21'4 x 11'11 (6.51m x 3.63m)
Kitchen : 9'8 x 7'10 (2.95m x 2.39m)
Bedroom 3 : 11'0 x 9'1 (3.36m x 2.77m)
Bathroom
Bedroom 1 : 11'11 x 10'11 (3.63m x 3.33m)
Bedroom 2: 9'0 x 9'0 (2.75m x 2.75m)

OUTSIDE

Private Patio Area
Communal Garden
Garage En-Bloc



Call Birchington - 01843 842551 ■ wardsof Kent.co.uk

- A private rental licensing scheme applies to some properties in this area, please contact us before proceeding
- Appliances & services are untested, dimensions are approximate and floor plans are not to scale

- Legal advice should be taken to verify fixtures/fittings, planning, alterations and/or lease details
- Through a Homewise Home For Life Plan people aged 60+ can secure this property for up to 59% less, by purchasing a Lifetime Lease.