

OVER 60?

Secure this property
for up to **59% less!**



Price

£350,000

Freehold

2x  1x  1x 

Potten Street, St. Nicholas At Wade,
Birchington, Kent, CT7

Wards
Helping you move forwards



Main features

- Being sold with no onward chain
- Stunning high ceilings
- Ready to move straight in
- Situated in a rural location with the most beautiful walks and scenery nearby
- Rarely available property that will be in high demand

Accommodation

GROUND FLOOR

Entrance Hallway

Lounge/Kitchen : 27'1 x 11'11 (8.26m x 3.63m)

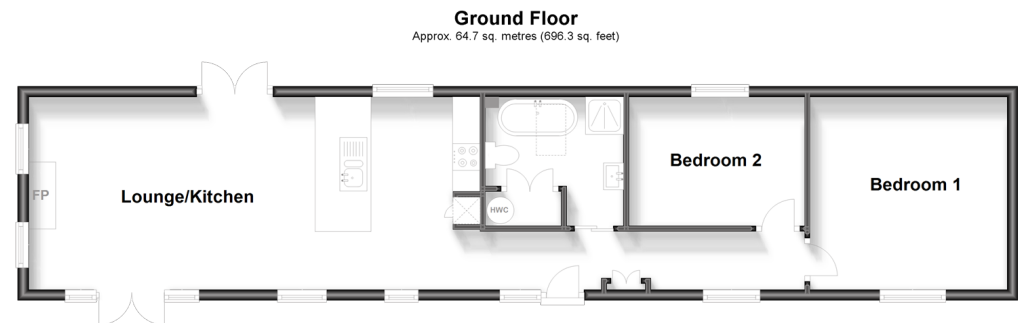
Bathroom

Bedroom 1: 12'1 x 11'10 (3.69m x 3.61m)

Bedroom 2 : 10'6 x 8'1 (3.20m x 2.47m)

OUTSIDE

Garden to Front and Rear



Call Birchington - 01843 842551 ■ wardsofkent.co.uk

- A private rental licensing scheme applies to some properties in this area, please contact us before proceeding
- Appliances & services are untested, dimensions are approximate and floor plans are not to scale

- Legal advice should be taken to verify fixtures/fittings, planning, alterations and/or lease details
- Through a Homewise Home For Life Plan people aged 60+ can secure this property for up to 59% less, by purchasing a Lifetime Lease.