



Price
£310,000

Freehold

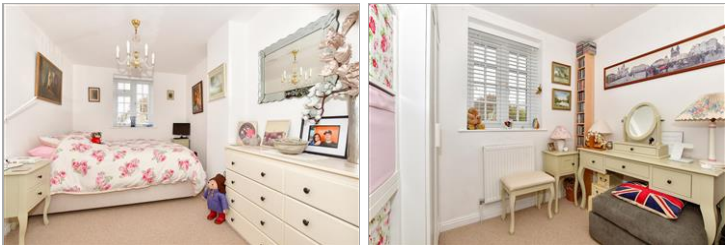
2x  2x  1x 

**Manor Road, St.
Nicholas At Wade,
Birchington, Kent, CT7**

OVER 60?

Secure this property
for up to **59% less!**

Wards
Helping you move forwards



Main features

- Beautiful rear garden, perfect for a keen gardener
- Presented to a lovely standard
- Village location
- Very welcoming home, ready for someone to move straight in
- Situated in the popular St Nicholas at Wade with two homely pubs, shops and a post office

Accommodation

GROUND FLOOR

Entrance Hallway

Shower Room

Lounge/Dining Area : 19'4 x 16'7 (5.90m x 5.06m)

Kitchen : 7'10 x 5'6 (2.39m x 1.68m)

FIRST FLOOR

Landing

Shower Room

Bedroom 1 : 15'7 x 11'10 (4.75m x 3.61m)

Bedroom 2 : 8'2 x 7'9 (2.49m x 2.36m)

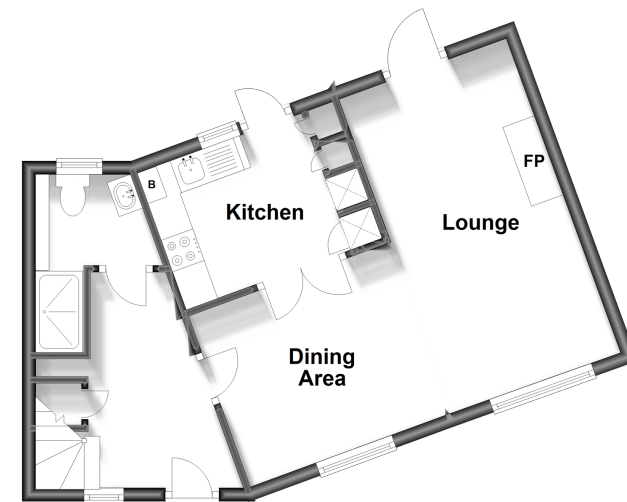
OUTSIDE

Garden to Rear

Shared Driveway

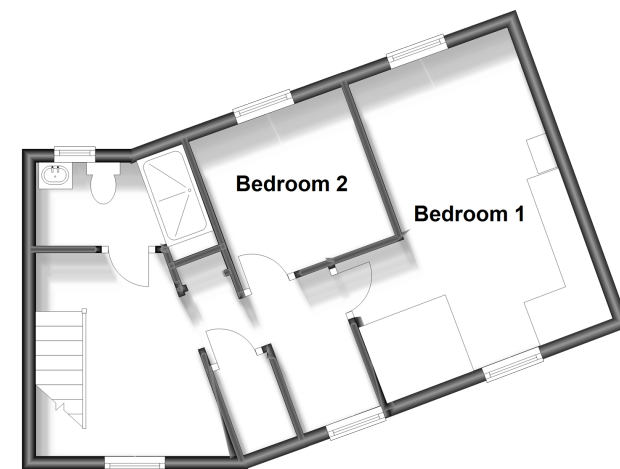
Ground Floor

Approx. 40.1 sq. metres (431.5 sq. feet)



First Floor

Approx. 37.3 sq. metres (402.0 sq. feet)



Call Birchington - 01843 842551 ■ wardsofkent.co.uk

- A private rental licensing scheme applies to some properties in this area, please contact us before proceeding
- Legal advice should be taken to verify fixtures/fittings, planning, alterations and/or lease details
- Appliances & services are untested, dimensions are approximate and floor plans are not to scale
- Through a Homewise Home For Life Plan people aged 60+ can secure this property for up to 59% less, by purchasing a Lifetime Lease.



10129487/20240322/DL/DS