



Price

£425,000

Freehold

3x  2x  2x 

**Manor Lea Road, St
Nicholas At Wade,
Birchington, Kent, CT7**

OVER 60?

Secure this property
for up to **59% less!**

Wards
Helping you move forwards



Main features

- Immaculately presented throughout
- Ready for you to move straight into
- Guest room on the ground floor with own private entrance
- Stunning large garden with show stopping bar, perfect for entertaining
- Situated in the wonderful village of St Nicholas at Wade

Accommodation

GROUND FLOOR

Entrance Hallway
 Lounge : 11'6 x 11'0 (3.51m x 3.36m)
 Kitchen : 11'8 x 6'7 (3.56m x 2.01m)
 Dining Area : 13'11 x 10'10 (4.24m x 3.30m)
 Utility : 12'1 x 5'10 (3.69m x 1.78m)
 Cloakroom
 Guest Room: 18'9 x 8'3 (5.72m x 2.52m)
 En-Suite Shower Room

FIRST FLOOR

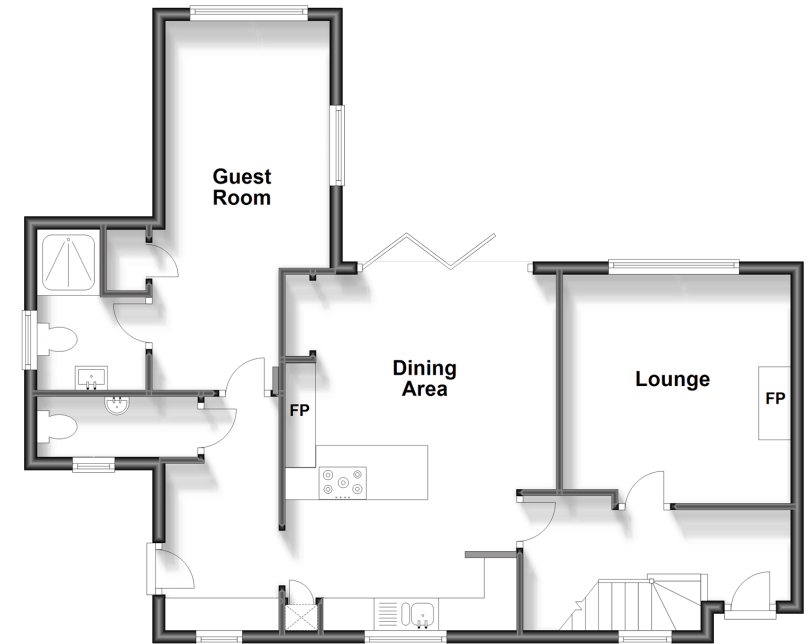
Landing
 Bedroom 2 : 10'8 x 10'1 (3.25m x 3.08m)
 Bathroom
 Bedroom 1 : 14'9 x 11'2 (4.50m x 3.41m)
 Bedroom 3 : 9'4 x 7'2 (2.85m x 2.19m)

OUTSIDE

Off Road Parking
 Garden to Rear
 Out Building/Bar : 15'3 x 12'3 (4.65m x 3.74m)

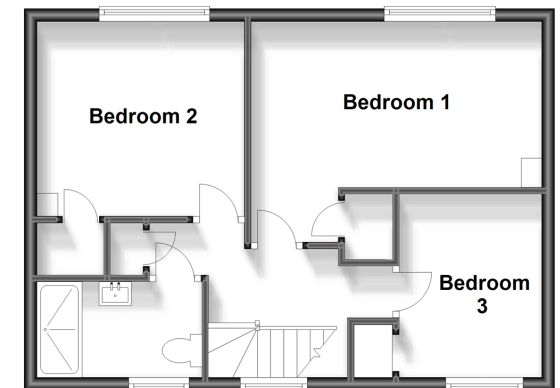
Ground Floor

Approx. 69.6 sq. metres (749.3 sq. feet)



First Floor

Approx. 43.1 sq. metres (463.5 sq. feet)



Call Birchington - 01843 842551 ■ wardsof Kent.co.uk

- The seller is a person connected with Wards as defined in the Estate Agents Act 1979
- A private rental licensing scheme applies to some properties in this area, please contact us before proceeding
- Legal advice should be taken to verify fixtures/fittings, planning, alterations and/or lease details
- Appliances & services are untested, dimensions are approximate and floor plans are not to scale
- Through a Homewise Home For Life Plan people aged 60+ can secure this property for up to 59% less, by purchasing a Lifetime Lease.



10129513/20230918/DS/DS