



Price

£675,000

Freehold

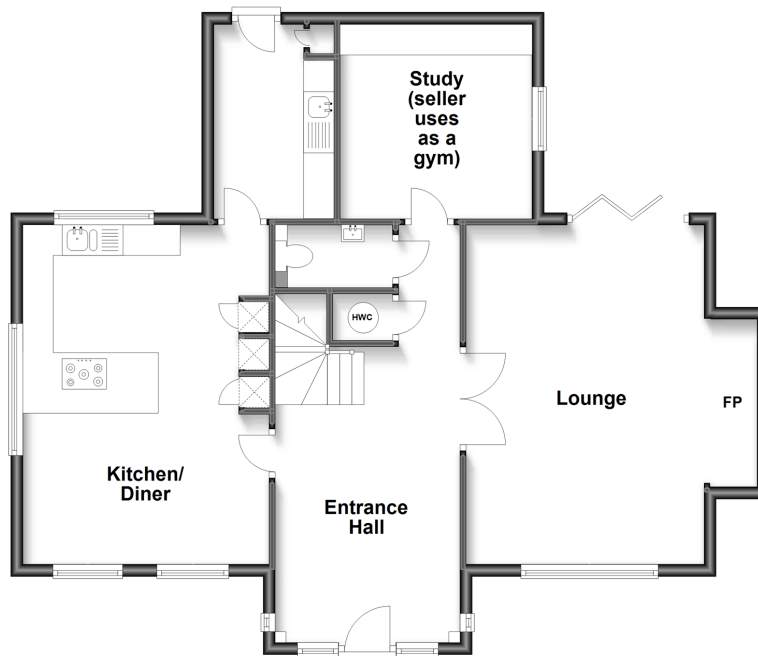
4x  3x  1x 

Windmill View, Birchington, Kent, CT7

Wards
Helping you move forwards

Ground Floor

Approx. 85.7 sq. metres (922.2 sq. feet)



First Floor

Approx. 83.3 sq. metres (896.5 sq. feet)



Accommodation

GROUND FLOOR

Entrance Hallway

Lounge : 18'3 x 12'11 (5.57m x 3.94m)

Study (Used as a Gym): 10'5 x 10'5 (3.18m x 3.18m)

Cloakroom

Kitchen : 18'5 x 13'8 (5.62m x 4.17m)

Utility Room : 10'6 x 6'6 (3.20m x 1.98m)

FIRST FLOOR

Landing

Bedroom 1 : 15'3 x 9'10 (4.65m x 3.00m)

En-Suite Shower

Bedroom 2 : 13'4 x 10'9 (4.07m x 3.28m)

Bedroom 3 : 13'0 x 8'11 (3.97m x 2.72m)

Bedroom 4: 12'11 x 8'10 (3.94m x 2.69m)

Bathroom

OUTSIDE

Off Road Parking

Garden to Rear



Main features

- Being sold with no onward chain
- Beautiful family home with handy utility room
- Secure gated location and electric car charging point
- Spacious rooms throughout, with a fantastic walk-in wardrobe and en-suite to the main bedroom
- Situated in the quiet location of Sarre



Nearest Schools

Primary Schools: St Nicholas At Wade C of E Primary 0.9 miles, Monkton C of E Primary 1.7 miles, Chislet C of E Primary 2.2 miles
Secondary Schools: King Ethelbert School 4.3 miles, Spires Academy 4.4 miles, Ursuline College 4.5 miles



Transport Information

Train Stations: Minster 3.2 miles, Birchington-On-Sea 3.6 miles, Westgate-on-Sea 5.0 miles



Address

Windmill View, Birchington, Kent, CT7



Directions

For directions to this property please contact us.



Wards
Helping you move forwards

Call Birchington Branch 01843 842551 ■ wardsofkent.co.uk



- A private rental licensing scheme applies to some properties in this area, please contact us before proceeding
- Appliances & services are untested, dimensions are approximate and floor plans are not to scale

■ Legal advice should be taken to verify fixtures/fittings, planning, alterations and/or lease details



10129558/20240330/DL/DS