

OVER 60?

Secure this property
for up to **59% less!**



Price

£170,000

Leasehold

1x  1x  1x 

Cleven Lodge, Sarre Court, Sarre,
Birchington, Kent, CT7

Wards
Helping you move forwards



Main features

- Being sold with no onward chain
- Allocated parking available
- Situated in the popular location of Sarre
- Perfect first time buy or for someone looking for a second home
- Surrounded by picturesque communal gardens

Accommodation

GROUND FLOOR

Entrance Hallway

Bathroom

Bedroom : 11'0 x 8'11 (3.36m x 2.72m)

Lounge : 14'1 x 9'9 (4.30m x 2.97m)

Kitchen : 9'0 x 7'11 (2.75m x 2.41m)

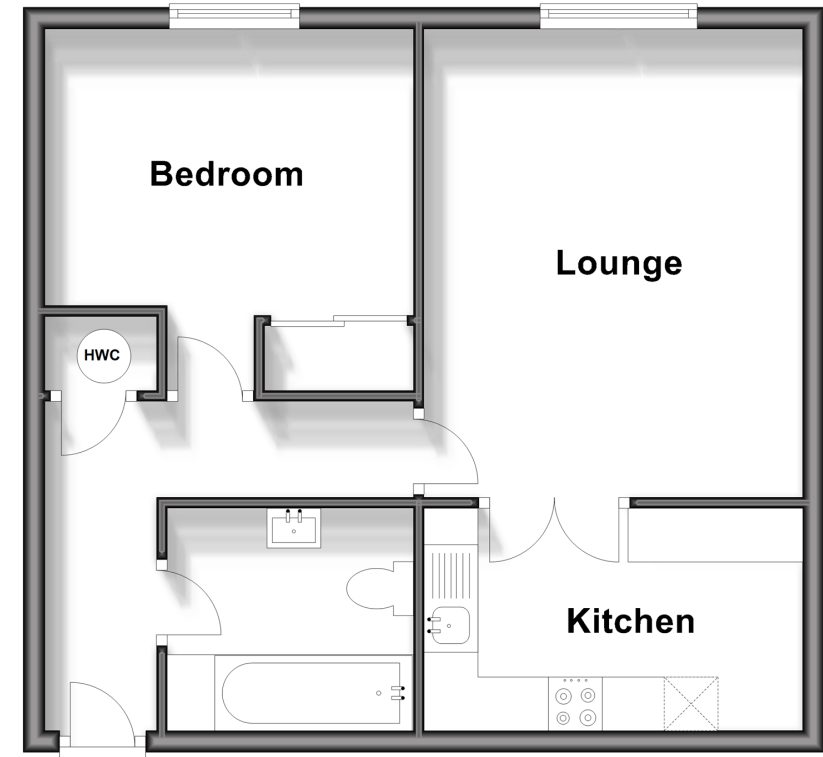
OUTSIDE

Allocated Parking Space

Communal Garden

Ground Floor

Approx. 45.9 sq. metres (494.4 sq. feet)



Call Birchington - 01843 842551 ■ wardsofKent.co.uk

- A private rental licensing scheme applies to some properties in this area, please contact us before proceeding
- If buying to let, the energy rating will need to be improved to at least 'E' rating before you can let the property
- Legal advice should be taken to verify fixtures/fittings, planning, alterations and/or lease details
- Appliances & services are untested, dimensions are approximate and floor plans are not to scale
- Through a Homewise Home For Life Plan people aged 60+ can secure this property for up to 59% less, by purchasing a Lifetime Lease.



10129605/20240403/DS/DS