

OVER 60?

Secure this property
for up to **59% less!**



Price
£350,000
Freehold

2x  1x  1x 

Ingoldsby Road, Minnis Bay, Birchington,
Kent, CT7

Wards
Helping you move forwards



Main features

- Being sold with no onward chain
- Beautiful sunny aspect garden
- Ready for someone to move straight into
- Perfect home if you're looking to downsize or to live by the seaside
- Situated in a very popular location just a short walk to the stunning beach, High Street and local amenities

Accommodation

GROUND FLOOR

Porch
Entrance Hallway
Bedroom 2: 12'2 x 8'8 (3.71m x 2.64m)
Wet Room : 7'10 x 5'4 (2.39m x 1.63m)
Lounge : 14'8 x 11'3 (4.47m x 3.43m)
Bedroom 1 : 11'8 x 11'3 (3.56m x 3.43m)
Garden Room: 13'10 x 8'11 (4.22m x 2.72m)
Kitchen : 11'11 x 8'6 (3.63m x 2.59m)

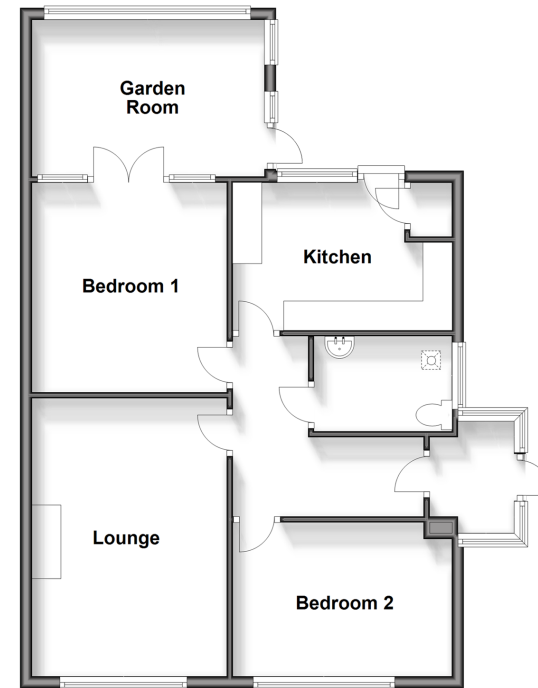
OUTBUILDING

Garage

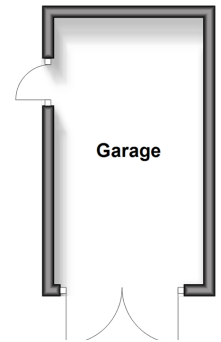
OUTSIDE

Off Road Parking
Garden to Front and Rear

Ground Floor
Approx. 73.4 sq. metres (790.1 sq. feet)



Outbuilding
Approx. 11.6 sq. metres (124.4 sq. feet)



Call Birchington - 01843 842551 ■ wardsofKent.co.uk

- The seller is a person connected with Wards as defined in the Estate Agents Act 1979
- Legal advice should be taken to verify fixtures/fittings, planning, alterations and/or lease details
- Through a Homewise Home For Life Plan people aged 60+ can secure this property for up to 59% less, by purchasing a Lifetime Lease.

- A private rental licensing scheme applies to some properties in this area, please contact us before proceeding
- Appliances & services are untested, dimensions are approximate and floor plans are not to scale