

**OVER 60?**

Secure this property  
for up to **59% less!**



**Price**

**£130,000**

**Leasehold**

1x  1x  1x 

Palm Court, Rowena Road,  
Westgate-On-Sea, Kent, CT8

*Wards*  
Helping you move forwards





## Main features

- Being sold with no onward chain
- Beautiful sea views from the bedroom, kitchen and lounge
- Ready for someone to call home
- Access to the communal gardens and resident lounge
- Situated in a very popular location in Westgate, close to local amenities and bus routes

## Accommodation

### FIRST FLOOR

Entrance Hallway

Lounge/Diner : 19'9 x 10'0 (6.02m x 3.05m)

Kitchen : 7'2 x 7'1 (2.19m x 2.16m)

Shower Room

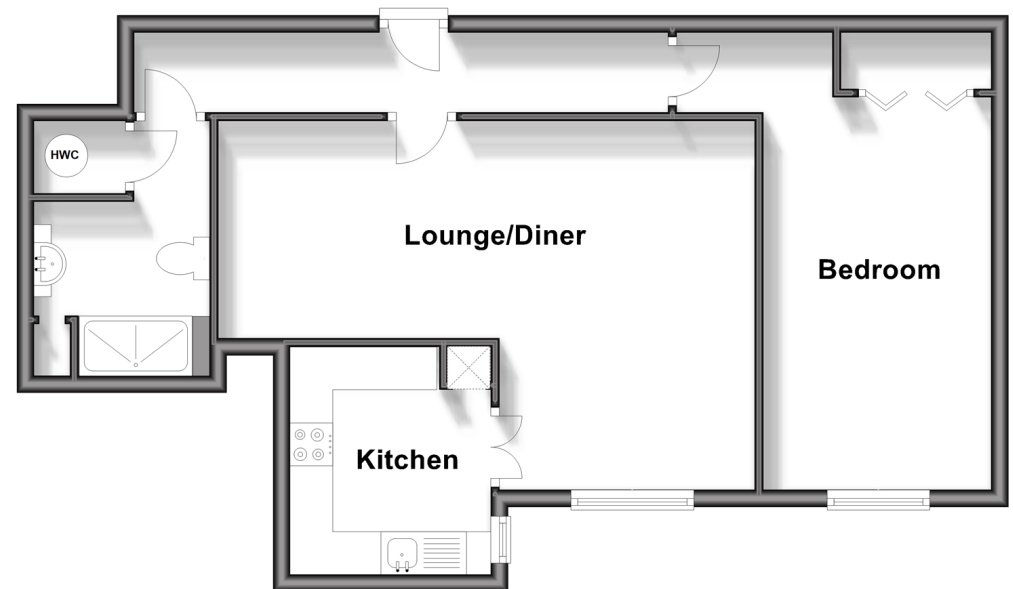
Bedroom : 13'0 x 9'2 (3.97m x 2.80m)

### OUTSIDE

Communal Garden

### First Floor

Approx. 56.6 sq. metres (609.3 sq. feet)



**Call Birchington - 01843 842551 ■ [wardsofkent.co.uk](http://wardsofkent.co.uk)**

- A private rental licensing scheme applies to some properties in this area, please contact us before proceeding
- Appliances & services are untested, dimensions are approximate and floor plans are not to scale

- Legal advice should be taken to verify fixtures/fittings, planning, alterations and/or lease details
- Through a Homewise Home For Life Plan people aged 60+ can secure this property for up to 59% less, by purchasing a Lifetime Lease.