

OVER 60?

Secure this property
for up to **59% less!**



Price

£750,000

Freehold

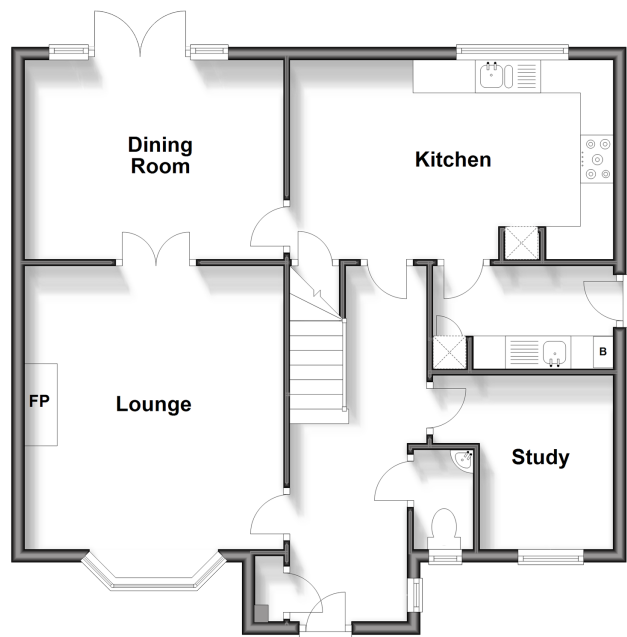
6x  3x  3x 

Foreland Heights, Broadstairs, Kent, CT10

Wards
Helping you move forwards

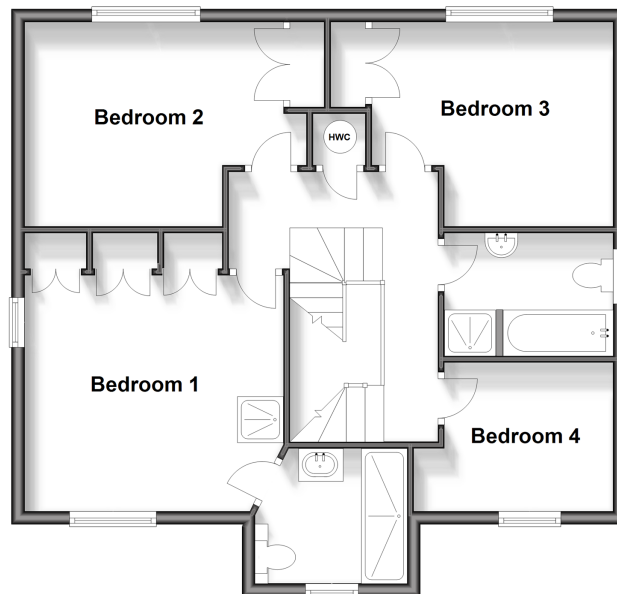
Ground Floor

Approx. 69.6 sq. metres (749.6 sq. feet)



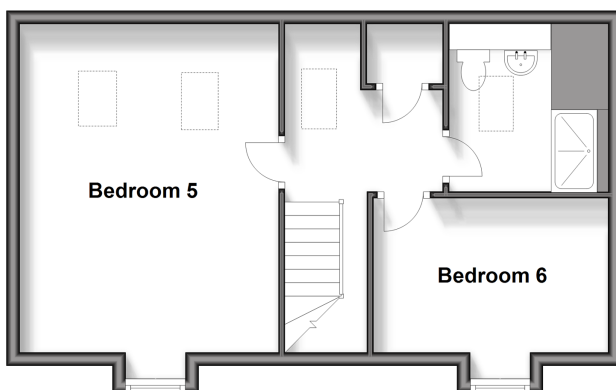
First Floor

Approx. 68.3 sq. metres (735.2 sq. feet)



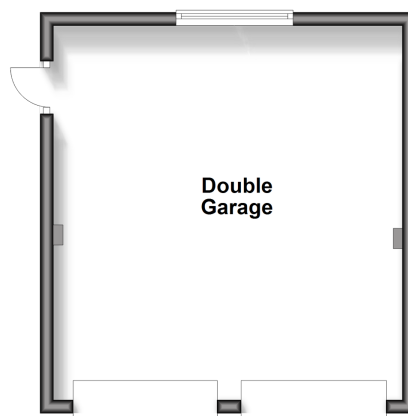
Second Floor

Approx. 45.6 sq. metres (490.6 sq. feet)



Outbuilding

Approx. 30.3 sq. metres (325.8 sq. feet)



Accommodation

GROUND FLOOR

Entrance Hallway

Downstairs Cloakroom

Study: 8'6 x 6'7 (2.59m x 2.01m)

Lounge: 14'0 x 12'9 (4.27m x 3.89m)

Dining Room: 12'9 x 9'8 (3.89m x 2.95m)

Kitchen: 16'3 x 9'8 (4.96m x 2.95m)

Utility Room

FIRST FLOOR

Landing

Bedroom 1: 12'9 x 11'9 (3.89m x 3.58m)

En-suite Shower Room

Bedroom 2: 12'7 x 9'9 (3.84m x 2.97m)

Bedroom 3: 12'5 x 9'8 (3.79m x 2.95m)

Bedroom 4: 8'6 x 7'7 (2.59m x 2.31m)

Family Bathroom

SECOND FLOOR

Landing

Bedroom 5: 15'0 x 13'1 (4.58m x 3.99m)

Shower Room

Bedroom 6: 11'8 x 8'8 (3.56m x 2.64m)

OUTSIDE

Front Garden

Double Garage

Off Road Parking

Rear Garden



Main features

- Large detached family house
- Double garage and ample off road parking
- Set across three floors offering a versatile layout
- Sunny rear garden
- Located between the beach and fields offering a great variety of walks



Nearest Schools

Primary Schools: St Peter-in-Thamet CofE 0.7 miles, St Joseph's Catholic 0.7 miles, Upton Junior 1.0 miles
Secondary Schools: The Foreland School 0.3 miles, Stone Bay School 0.3 miles, The Charles Dickens School 1.1 miles

Transport Information

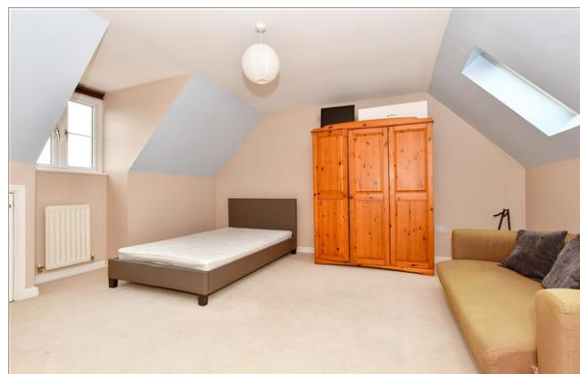
Train Stations: Broadstairs 1.4 miles, Dumpton Park 2.5 miles, Ramsgate 4.0 miles

Address

Foreland Heights, Broadstairs, Kent, CT10

Directions

For directions to this property please contact us.





Call Broadstairs Branch 01843 602546 ■ wardsofkent.co.uk



- A private rental licensing scheme applies to some properties in this area, please contact us before proceeding
- Appliances & services are untested, dimensions are approximate and floor plans are not to scale

- Legal advice should be taken to verify fixtures/fittings, planning, alterations and/or lease details
- Through a Homewise Home For Life Plan people aged 60+ can secure this property for up to 59% less, by purchasing a Lifetime Lease.



10223745/20240404/ER/ATN