



**OVER 60?**

Secure this property  
for up to **59% less!**

**Price**

**£535,000**

**Freehold**

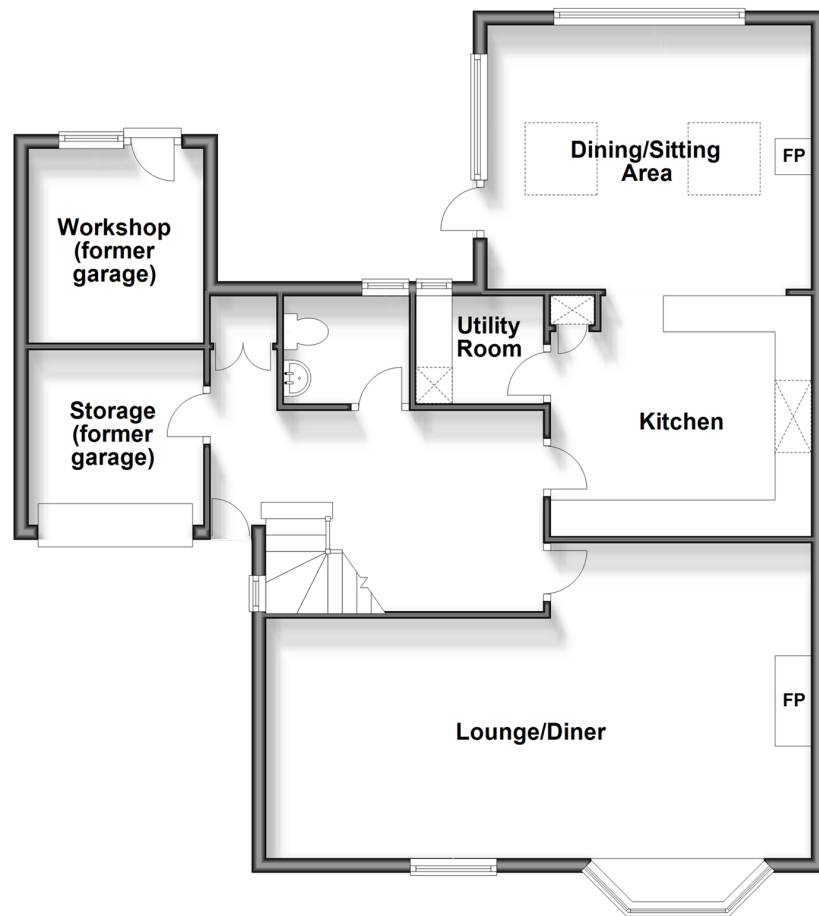
3x  2x  2x 

**Harrow Dene,  
Broadstairs, Kent, CT10**

*Wards*  
Helping you move forwards

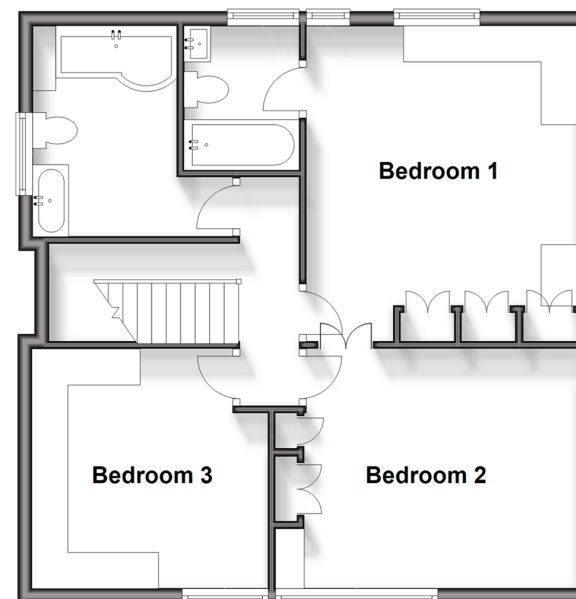
## Ground Floor

Approx. 91.7 sq. metres (986.9 sq. feet)



## First Floor

Approx. 58.6 sq. metres (631.0 sq. feet)



## Accommodation

### GROUND FLOOR

Entrance Hall

Downstairs Toilet

Lounge/Diner : 24'3 x 14'3 (7.40m x 4.35m)

Kitchen/Dining/Sitting Area: 23'9 x 11'8 (7.24m x 3.56m)

Utility Room : 5'6 x 4'8 (1.68m x 1.42m)

### FIRST FLOOR

Landing

Bedroom 1: 14'2 x 12'3 (4.32m x 3.74m)

En-suite Bathroom

Bedroom 2: 13'9 x 10'9 (4.19m x 3.28m)

Bedroom 3: 10'8 x 10'6 (3.25m x 3.20m)

Family Bathroom

### OUTSIDE

Front Garden

Off Road Parking

Rear Garden

Storage (former Garage)

Workshop (former Garage)



## Main features

- Chain Free!
- Outside kitchen/BBQ area
- Extended kitchen/diner with a separate utility room
- Within the catchment for schools, transport links and local amenities
- Ready to move into no work required
- Garage with power and electric door



## Nearest Schools

Primary Schools: St Joseph's Catholic 0.1 miles, St Peter-in-Thamet CofE 0.3 miles, Upton Junior 0.4 miles.  
Secondary Schools: The Charles Dickens 0.3 miles, Dane Court Grammar 0.4 miles, The Foreland School 0.5 miles

## Transport Information

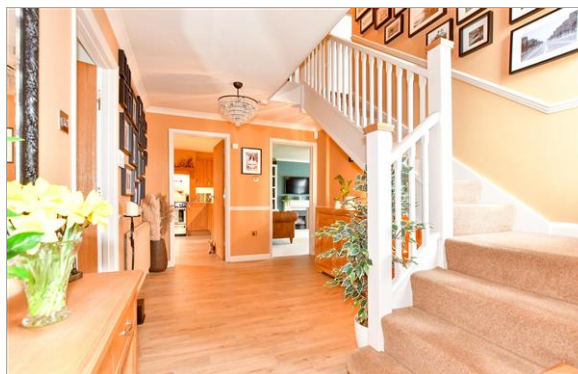
Train Stations: Broadstairs 0.4 miles, Dumpton Park 1.3 miles, Ramsgate 1.8 miles

## Address

Harrow Dene, Broadstairs, Kent, CT10

## Directions

For directions to this property please contact us.





Call Broadstairs Branch 01843 602546 ■ [wardsofkent.co.uk](https://wardsofkent.co.uk)



- A private rental licensing scheme applies to some properties in this area, please contact us before proceeding
- Appliances & services are untested, dimensions are approximate and floor plans are not to scale

- Legal advice should be taken to verify fixtures/fittings, planning, alterations and/or lease details
- Through a Homewise Home For Life Plan people aged 60+ can secure this property for up to 59% less, by purchasing a Lifetime Lease.



10225520/20240509/JR/ATN