



OVER 60?

Secure this property
for up to **59% less!**

Price

£650,000

Freehold

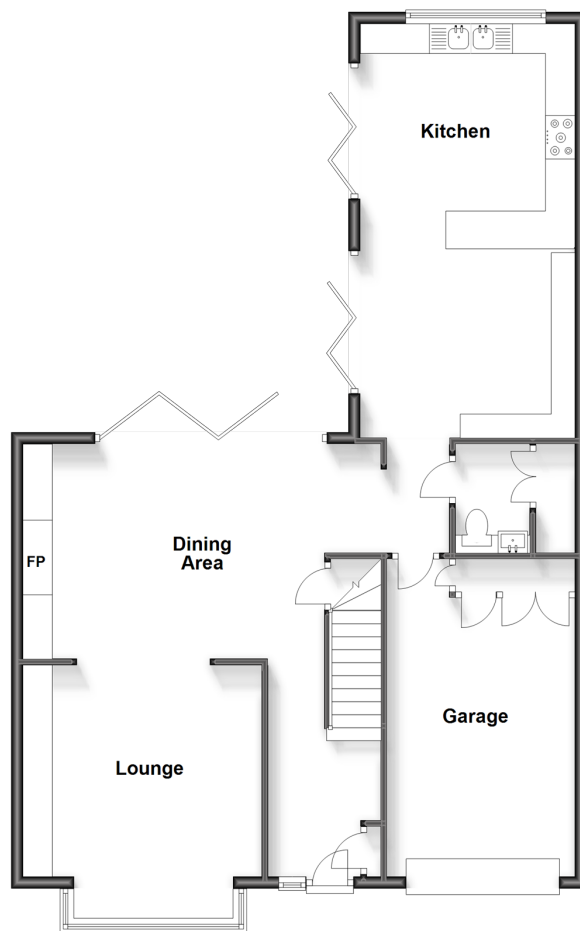
4x  2x  2x 

**Ramsgate Road,
Margate, Kent, CT10**

Wards
Helping you move forwards

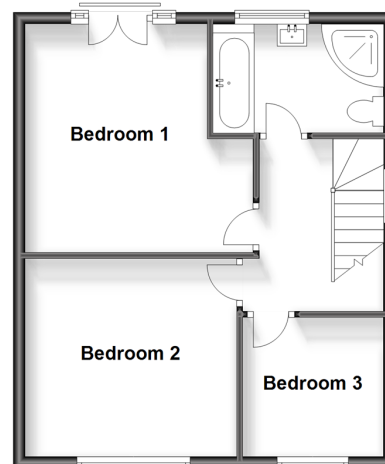
Ground Floor

Approx. 94.6 sq. metres (1018.2 sq. feet)



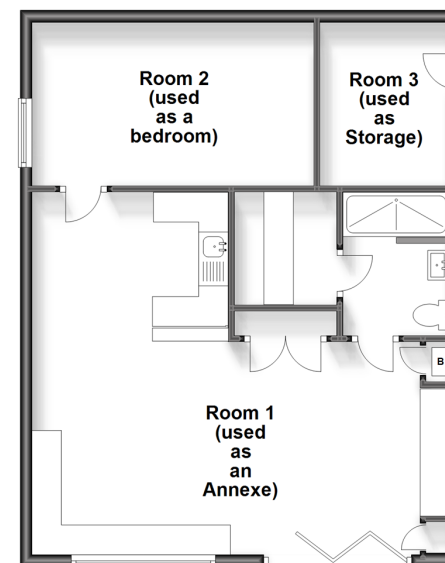
First Floor

Approx. 44.1 sq. metres (474.7 sq. feet)



Outbuilding

Approx. 63.4 sq. metres (682.3 sq. feet)



Accommodation

GROUND FLOOR

Entrance Hallway

Lounge: 14'11 x 13'7 (4.55m x 4.14m)

Dining Area: 20'0 x 11'9 (6.10m x 3.58m)

Kitchen: 22'11 x 12'1 (6.99m x 3.69m)

Downstairs Cloakroom

FIRST FLOOR

Landing

Bedroom 2: 12'1 x 10'9 (3.69m x 3.28m)

Bedroom 1: 13'4 x 12'11 (4.07m x 3.94m)

Bedroom 3: 7'11 x 7'10 (2.41m x 2.39m)

Bathroom

OUTSIDE

Front Garden

Garage & Off Road Parking

Rear Garden

OUTBUILDING (ANNEXE)

Room 1: 22'11 x 11'8 (6.99m x 3.56m)

Room 2 (used as a bedroom): 15'7 x 8'11 (4.75m x 2.72m)

Room 3 (Used as storage): 10'9 x 7'10 (3.28m x 2.39m)

Shower Room

Sauna



Main features

- Immaculacy presented and ready to move into
- Detached Annex already in-situ in the garden with a sauna
- Garage and off-road parking
- Spacious family home
- Modern fixtures and fittings throughout including underfloor heating



Nearest Schools

Primary Schools: Upton Junior 0.3 miles, Ramsgate, Holy Trinity C of E 0.4 miles, Bromstone, Broadstairs 0.6 miles
Secondary Schools: Hereson School 0.1 miles, Bradstow School 0.3 miles, Charles Dickens School 0.5 miles



Transport Information

Train Stations: Broadstairs 0.4 miles, Dumpton Park 0.5 miles, Ramsgate 1.3 miles



Address

Ramsgate Road, Margate, Kent, CT10



Directions

For directions to this property please contact us.



Call Broadstairs Branch 01843 602546 ■ wardsofkent.co.uk



- A private rental licensing scheme applies to some properties in this area, please contact us before proceeding
- Appliances & services are untested, dimensions are approximate and floor plans are not to scale

- Legal advice should be taken to verify fixtures/fittings, planning, alterations and/or lease details
- Through a Homewise Home For Life Plan people aged 60+ can secure this property for up to 59% less, by purchasing a Lifetime Lease.



10226887/20231002/JR/ATN