



Guide Price
£925,000

Freehold

5x  3x  4x 

**Foreland Heights,
Broadstairs, Kent, CT10**

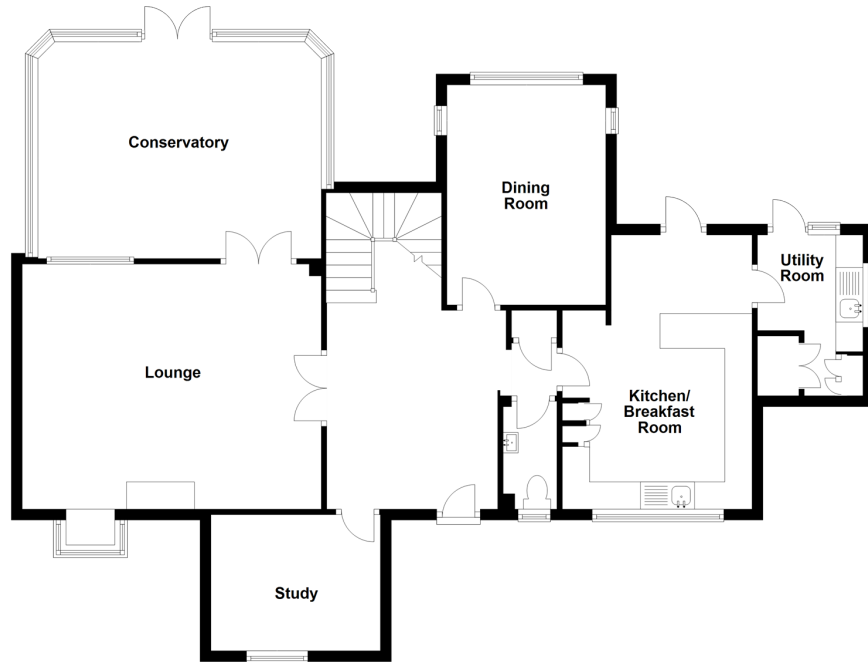
OVER 60?

You could get up to
59% off the price!*

Wards
Helping you move forwards

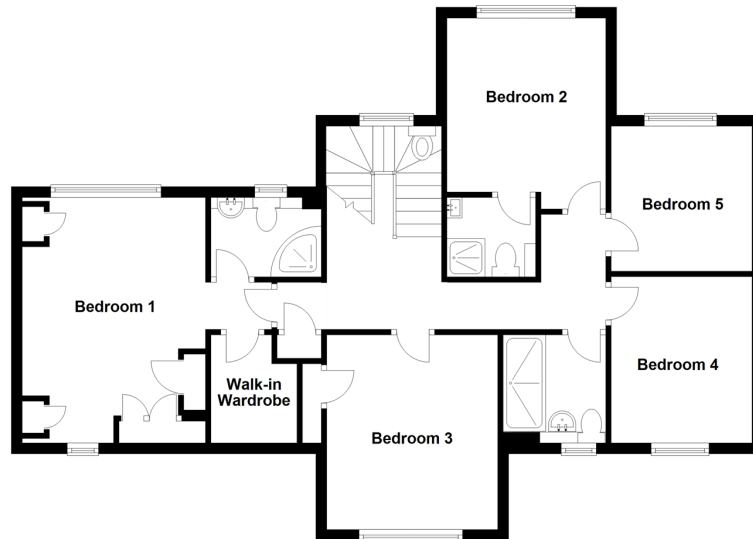
Ground Floor

Approx. 110.6 sq. metres (1190.0 sq. feet)



First Floor

Approx. 82.5 sq. metres (888.4 sq. feet)



Accommodation

GROUND FLOOR

Entrance Hallway

Lounge: 18'0 x 14'8 (5.49m x 4.47m)

Study: 10'2 x 8'2 (3.10m x 2.49m)

Dining Room: 13'2 x 9'6 (4.02m x 2.90m)

Kitchen/Breakfast Room: 19'0 x 11'4
(5.80m x 3.46m)

Utility Room: 10'3 x 6'4 (3.13m x 1.93m)

Downstairs Cloakroom

Conservatory: 17'8 x 13'6 (5.39m x 4.12m)

FIRST FLOOR

Landing

Bedroom 1: 14'7 x 10'6 (4.45m x 3.20m)

En-suite Shower Room

Walk in Wardrobe: 6'0 x 4'11 (1.83m x 1.50m)

Bedroom 3: 11'8 x 11'6 (3.56m x 3.51m)

Family Bathroom

Bedroom 4: 9'11 x 8'5 (3.02m x 2.57m)

Bedroom 2: 10'4 x 9'6 (3.15m x 2.90m)

En-suite Shower Room

Bedroom 5: 8'8 x 8'4 (2.64m x 2.54m)

OUTSIDE

Front Garden

Double Garage & Driveway

Rear Garden

Summer House: 10'11 x 8'5 (3.33m x 2.57m)



Main features

- Spacious family home situated at the top of North Foreland in a sought after cul de sac
- Off road parking and double garage
- Spacious conservatory and summerhouse
- Downstairs study ideal for anyone working from home
- 2 En-suite bathrooms and low maintenance rear garden



Nearest Schools

Primary Schools: St Peter-in-Thamet CofE Junior 0.7 miles, St Joseph's Catholic 0.7 miles, Upton Junior 1.0 miles.
Secondary Schools: The Foreland 0.3 miles, Stone Bay 0.3 miles, The Charles Dickens 1.1 miles, St George's CofE 1.6 miles



Transport Information

Train Stations: Broadstairs 1.4 miles, Dumpton Park 2.5 miles, Ramsgate 4.0 miles



Address

Foreland Heights, Broadstairs, Kent, CT10



Directions

For directions to this property please contact us.



Wards
Helping you move forwards

Call Broadstairs Branch 01843 602546 ■ wardsofkent.co.uk



- A private rental licensing scheme applies to some properties in this area, please contact us before proceeding
- Appliances & services are untested, dimensions are approximate and floor plans are not to scale

- Legal advice should be taken to verify fixtures/fittings, planning, alterations and/or lease details
- Our Homewise partnership offer a 'Home for Life' plan to buyers over 60, granting a lifetime lease for your protection and reducing the purchase price by up to 59%



10228771/20220426/JR/SR