



Price
£550,000

Freehold

4x  2x  3x 

**Ethel Road, Broadstairs,
Kent, CT10**

Wards
Helping you move forwards



Main features

- **Chain Free!**
- **Central Broadstairs location.**
Walking distance to station
- **Period features throughout including fireplaces and original stain glass**
- **Versatile layout offering space for home office or 1 bedroom self contained living quarters**
- **En-suite to bedroom 1**

Accommodation

GROUND FLOOR

Entrance Hallway

Lounge: 17'5 x 12'9 (5.31m x 3.89m)

Dining Room: 14'1 x 11'6 (4.30m x 3.51m)

Kitchen: 16'6 x 10'7 (5.03m x 3.23m)

Utility Room: 9'5 x 7'1 (2.87m x 2.16m)

Downstairs Toilet

FIRST FLOOR

Landing

Bathroom

Bedroom 4: 10'1 x 9'7 (3.08m x 2.92m)

Bedroom 1: 14'0 x 11'2 (4.27m x 3.41m)

En-suite Shower Room

Bedroom 2: 13'8 x 11'3 (4.17m x 3.43m)

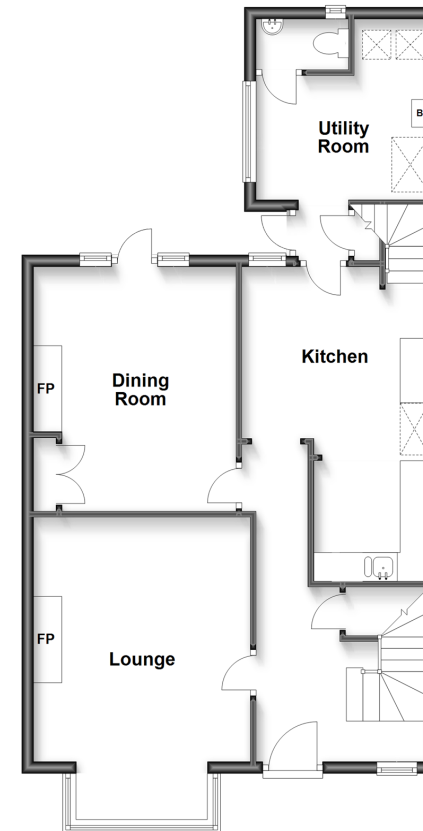
Bedroom 3: 10'9 x 9'4 (3.28m x 2.85m)

OUTSIDE

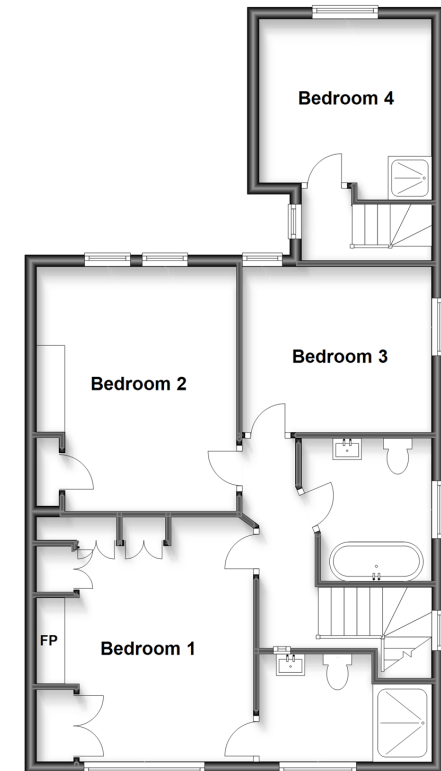
Front Garden

Rear Garden

Ground Floor
Approx. 73.5 sq. metres (791.3 sq. feet)



First Floor
Approx. 71.4 sq. metres (768.0 sq. feet)



Call Broadstairs - 01843 602546 ■ wardsofkent.co.uk

- A private rental licensing scheme applies to some properties in this area, please contact us before proceeding
- Legal advice should be taken to verify fixtures/fittings, planning, alterations and/or lease details
- Appliances & services are untested, dimensions are approximate and floor plans are not to scale



10228794/20230203/ATN/ATN