



Price
£700,000

Freehold

4x  3x  3x 

**Vicarage Street, St.
Peters, Broadstairs,
Kent, CT10**

OVER 60?

Secure this property
for up to **59% less!**

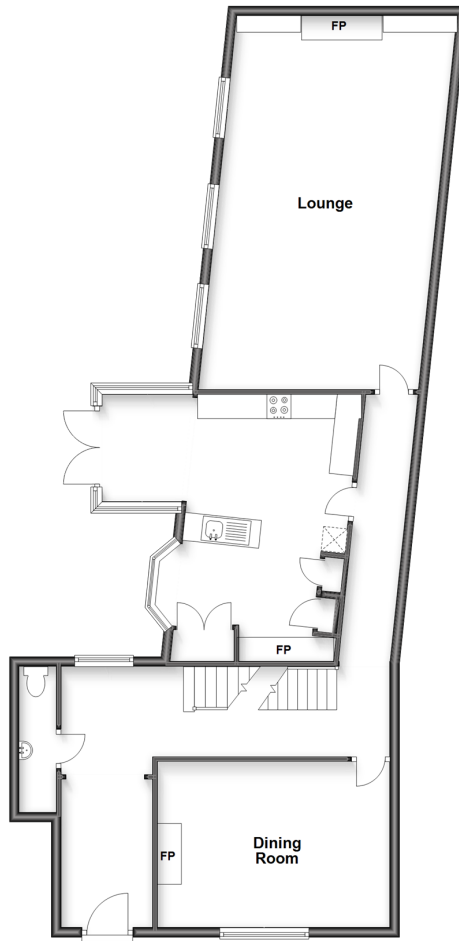


Video Tour available

Wards
Helping you move forwards

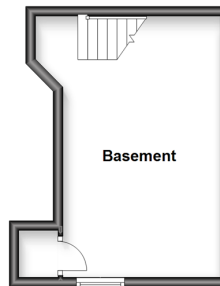
Ground Floor

Approx. 104.8 sq. metres (1127.8 sq. feet)



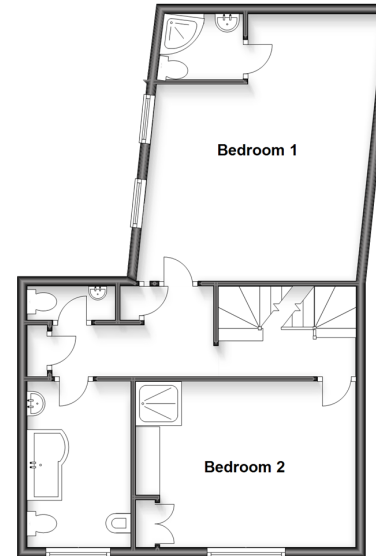
Basement

Approx. 19.1 sq. metres (206.1 sq. feet)



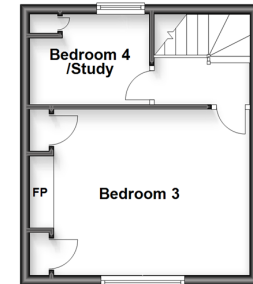
First Floor

Approx. 62.2 sq. metres (669.8 sq. feet)



Second Floor

Approx. 24.6 sq. metres (264.3 sq. feet)



Accommodation

BASEMENT

Basement Room: 19'5 x 11'0 (5.92m x 3.36m)

GROUND FLOOR

Entrance Hallway

Lounge: 25'2 x 15'5 (7.68m x 4.70m)

Kitchen: 18'3 x 8'0 (5.57m x 2.44m)

Dining Room: 15'0 x 12'0 (4.58m x 3.66m)

Utility Room

Downstairs Cloakroom

FIRST FLOOR

Landing

Bedroom 2: 13'6 x 11'0 (4.12m x 3.36m)

Bedroom 1: 17'7 x 15'3 (5.36m x 4.65m)

En-Suite Shower Room

Separate Toilet

Bathroom

SECOND FLOOR

Landing

Bedroom 4/Study: 8'5 x 8'1 (2.57m x 2.47m)

Bedroom 3: 14'6 x 11'2 (4.42m x 3.41m)

OUTSIDE

Front Garden

Off Road Parking

Rear Garden

ANNEXE

Lounge/Kitchen/Diner: 15'9 x 14'7 (4.80m x 4.45m)

Bedroom (1st Floor): 15'1 x 10'4 (4.60m x 3.15m)

En-Suite Shower Room



Main features

- Great investment opportunity
- Separate 1 bedroom, 2 storey annex in the rear garden
- Sought after St Peters village location
- Good access to local amenities, supermarket and bus routes
- Chain free



Nearest Schools

Primary Schools: St Joseph's Catholic 0.4 miles, Bromstone 0.5 miles, St Peter-in-Thamet CofE 0.5 miles
Secondary Schools: Dane Court Grammar 0.2 miles, The Charles Dickens 0.2 miles, St George's C of E Foundation 0.4 miles



Transport Information

Train Stations: Broadstairs 0.7 miles, Dumpton Park 1.2 miles, Ramsgate 1.6 miles



Address

Vicarage Street, St. Peters, Broadstairs, Kent, CT10



Directions

For directions to this property please contact us.



Call Broadstairs Branch 01843 602546 ■ wardsofkent.co.uk



- A private rental licensing scheme applies to some properties in this area, please contact us before proceeding
- Appliances & services are untested, dimensions are approximate and floor plans are not to scale

- Legal advice should be taken to verify fixtures/fittings, planning, alterations and/or lease details
- Through a Homewise Home For Life Plan people aged 60+ can secure this property for up to 59% less, by purchasing a Lifetime Lease.



10228856/20221214/JR/ATN