



Price

£350,000

Freehold

2x  1x  1x 

**Sycamore Close,
Broadstairs, Kent, CT10**



Virtual Reality Tour available

Wards
Helping you move forwards



Main features

- Sought after cul-de-sac location
- Off road parking
- Good size rear garden
- Separate lounge, dining area and kitchen/diner
- Ready to move straight into, no work required

Accommodation

GROUND FLOOR

Entrance Hallway

Dining Room: 10'10 x 8'0 (3.30m x 2.44m)

Lounge: 15'0 x 10'11 (4.58m x 3.33m)

Bathroom

Bedroom 1: 11'11 x 10'10 (3.63m x 3.30m)

Bedroom 2: 8'11 x 8'10 (2.72m x 2.69m)

Kitchen/Breakfast Room: 17'0 x 9'0 (5.19m x 2.75m)

Conservatory: 15'0 x 13'0 (4.58m x 3.97m)

OUTSIDE

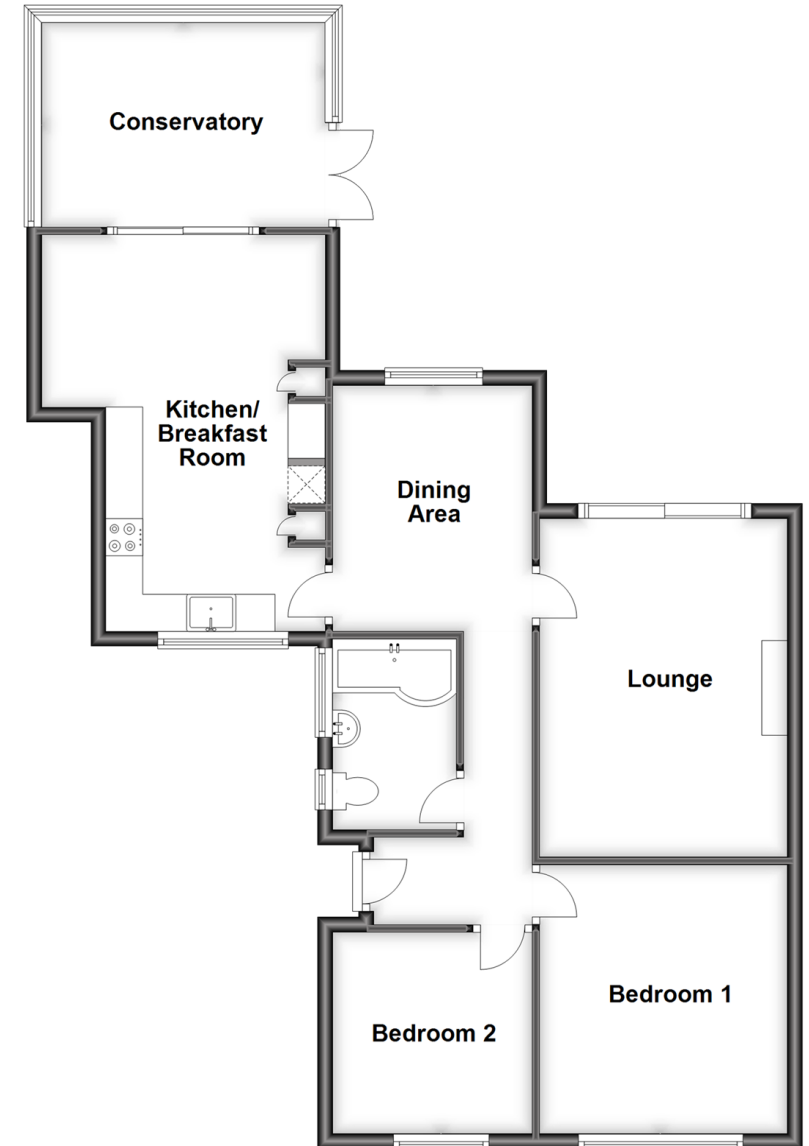
Front Garden

Off Road Parking

Rear Garden

Ground Floor

Approx. 83.9 sq. metres (903.3 sq. feet)



Call Broadstairs - 01843 602546 ■ wardsof Kent.co.uk

- A private rental licensing scheme applies to some properties in this area, please contact us before proceeding
- Legal advice should be taken to verify fixtures/fittings, planning, alterations and/or lease details
- Appliances & services are untested, dimensions are approximate and floor plans are not to scale



10228874/20230411/JOE/ATN