



Price
£425,000

Freehold

3x  1x  1x 

**Selwyn Drive,
Broadstairs, Kent, CT10**

OVER 60?

Secure this property
for up to **59% less!**



Video Tour available

Wards
Helping you move forwards



Main features

- Popular cul-de-sac location at the top of Broadstairs
- Link detached family house with a garage
- Downstairs cloakroom
- Scope to open plan/extend subject to planning permission
- Open plan lounge/diner with separate kitchen

Accommodation

GROUND FLOOR

Entrance Porch

Ground Floor Cloakroom

Lounge/Diner: 25'4 x 9'7 (7.73m x 2.92m)

Kitchen: 11'5 x 9'4 (3.48m x 2.85m)

FIRST FLOOR

Landing

Bedroom 3: 8'3 x 7'9 (2.52m x 2.36m)

Bedroom 1: 13'8 x 11'3 (4.17m x 3.43m)

Bedroom 2: 11'4 x 11'3 (3.46m x 3.43m)

Bathroom

OUTSIDE

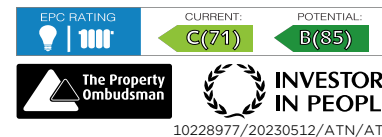
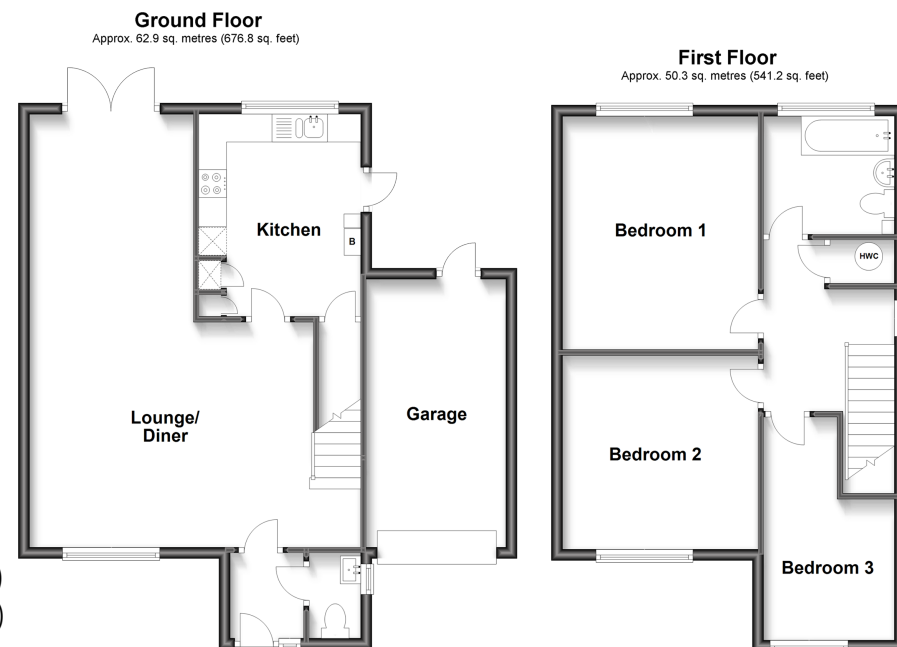
Front Garden

Garage & Off Road Parking

Rear Garden

Call Broadstairs - 01843 602546 ■ wardsofkent.co.uk

- A private rental licensing scheme applies to some properties in this area, please contact us before proceeding
- Legal advice should be taken to verify fixtures/fittings, planning, alterations and/or lease details
- Appliances & services are untested, dimensions are approximate and floor plans are not to scale
- Through a Homewise Home For Life Plan people aged 60+ can secure this property for up to 59% less, by purchasing a Lifetime Lease.



10228977/20230512/ATN/ATN