



Price

£200,000

Leasehold

2x  1x  1x 

**Princess Anne Road,
Broadstairs, Kent, CT10**

OVER 60?

Secure this property
for up to **59% less!**

Wards
Helping you move forwards



Main features

- Ground floor flat
- Off road parking
- Modern shower Room
- Good size rear garden with outbuilding
- Over 100 years remaining on the lease

Accommodation

GROUND FLOOR

Entrance Hallway

Lounge: 16'0 x 10'9 (4.88m x 3.28m)

Bedroom 1: 13'1 x 12'6 (3.99m x 3.81m)

Shower Room

Kitchen: 13'1 x 10'5 (3.99m x 3.18m)

Bedroom 2: 12'4 x 8'9 (3.76m x 2.67m)

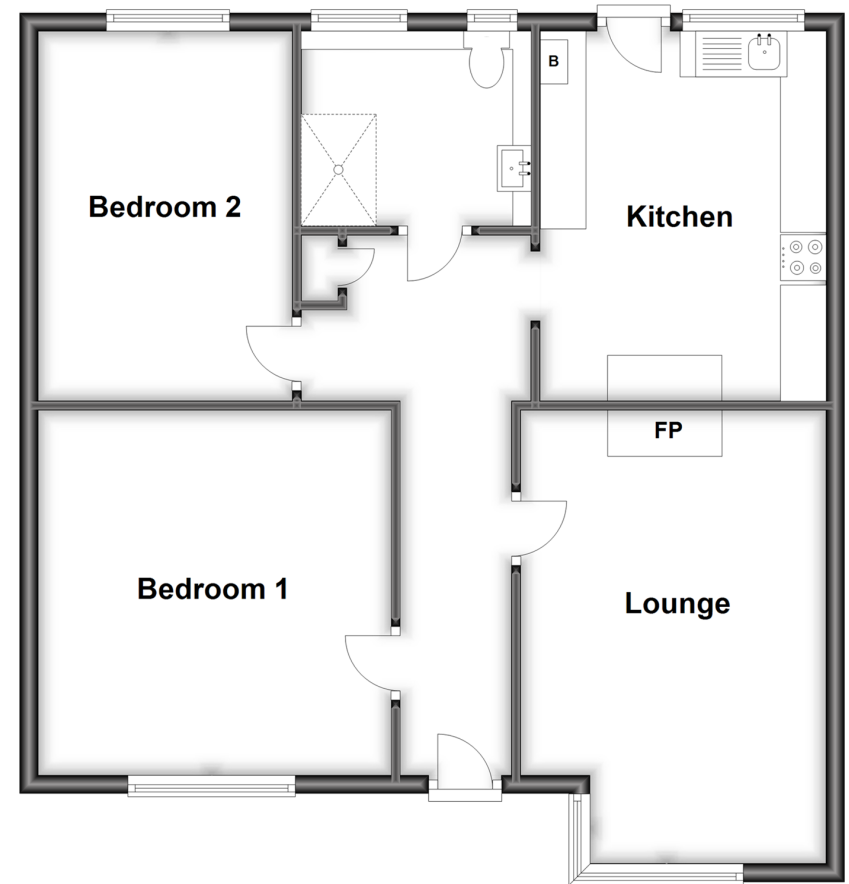
OUTSIDE

Rear Garden

Off Road Parking

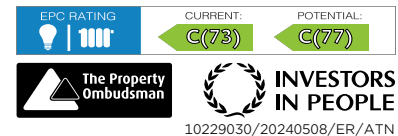
Ground Floor

Approx. 72.4 sq. metres (778.8 sq. feet)



Call Broadstairs - 01843 602546 ■ wardsofkent.co.uk

- A private rental licensing scheme applies to some properties in this area, please contact us before proceeding
- Legal advice should be taken to verify fixtures/fittings, planning, alterations and/or lease details
- Appliances & services are untested, dimensions are approximate and floor plans are not to scale
- Through a Homewise Home For Life Plan people aged 60+ can secure this property for up to 59% less, by purchasing a Lifetime Lease.



10229030/20240508/ER/ATN