



Price
£279,995

Freehold

3x  1x  2x 

**The Maples, Broadstairs,
Kent, CT10**

Wards
Helping you move forwards



Main features

- Catchment area for top Broadstairs schools
- Off road parking
- Garage and off road parking
- Close to local shops and amenities
- Low maintenance rear garden

Accommodation

GROUND FLOOR

Entrance Hallway

Lounge: 14'3 x 12'5 (4.35m x 3.79m)

Dining Room: 9'7 x 8'2 (2.92m x 2.49m)

Kitchen: 11'0 x 7'2 (3.36m x 2.19m)

Conservatory: 13'5 x 7'5 (4.09m x 2.26m)

FIRST FLOOR

Landing

Bedroom 1: 14'4 x 8'7 (4.37m x 2.62m)

Bedroom 2: 9'2 x 9'1 (2.80m x 2.77m)

Bedroom 3: 10'11 x 6'7 (3.33m x 2.01m)

Bathroom

OUTSIDE

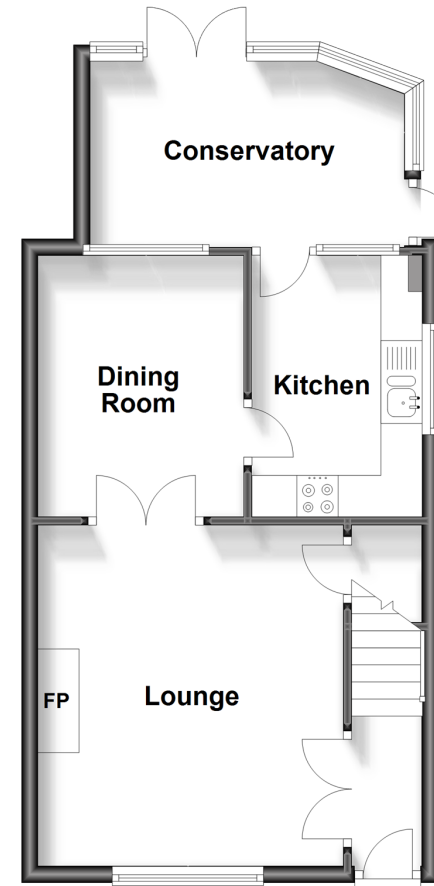
Front Garden

Garage & Off Road Parking

Rear Garden

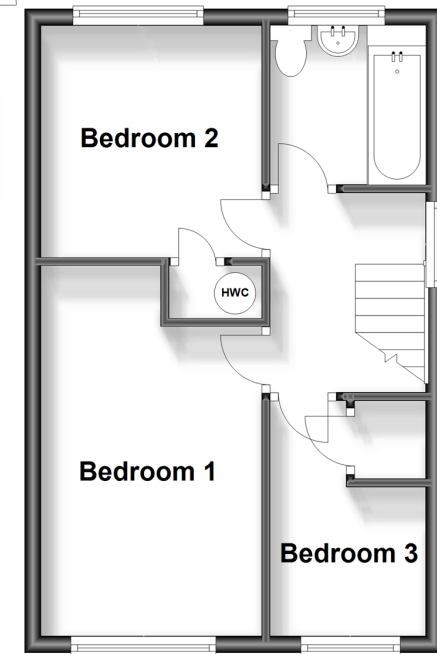
Ground Floor

Approx. 43.1 sq. metres (464.1 sq. feet)



First Floor

Approx. 34.4 sq. metres (370.0 sq. feet)



Call Broadstairs - 01843 602546 ■ wardsofkent.co.uk

- A private rental licensing scheme applies to some properties in this area, please contact us before proceeding
- Legal advice should be taken to verify fixtures/fittings, planning, alterations and/or lease details
- Appliances & services are untested, dimensions are approximate and floor plans are not to scale



10229074/20230906/ATN/ATN