



OVER 60?

Secure this property
for up to **59% less!**

Price

£200,000

Leasehold

2x  1x  1x 

**Basement Flat, High
Street, Broadstairs,
Kent, CT10**

Wards
Helping you move forwards



Main features

- Chain free
- Central location - situated at the top of town
- Separate entrance into the flat
- Private rear garden
- Open plan lounge/kitchen/diner on the lower ground floor

Split Level Ground Floor

Approx. 30.5 sq. metres (328.3 sq. feet)

Lower Ground Floor

Approx. 33.8 sq. metres (363.4 sq. feet)

Accommodation

LOWER GROUND FLOOR

Entrance Hallway

Lounge: 11'7 x 10'9 (3.53m x 3.28m)

Kitchen: 11'5 x 9'10 (3.48m x 3.00m)

Bathroom

SPLIT LEVEL GROUND FLOOR

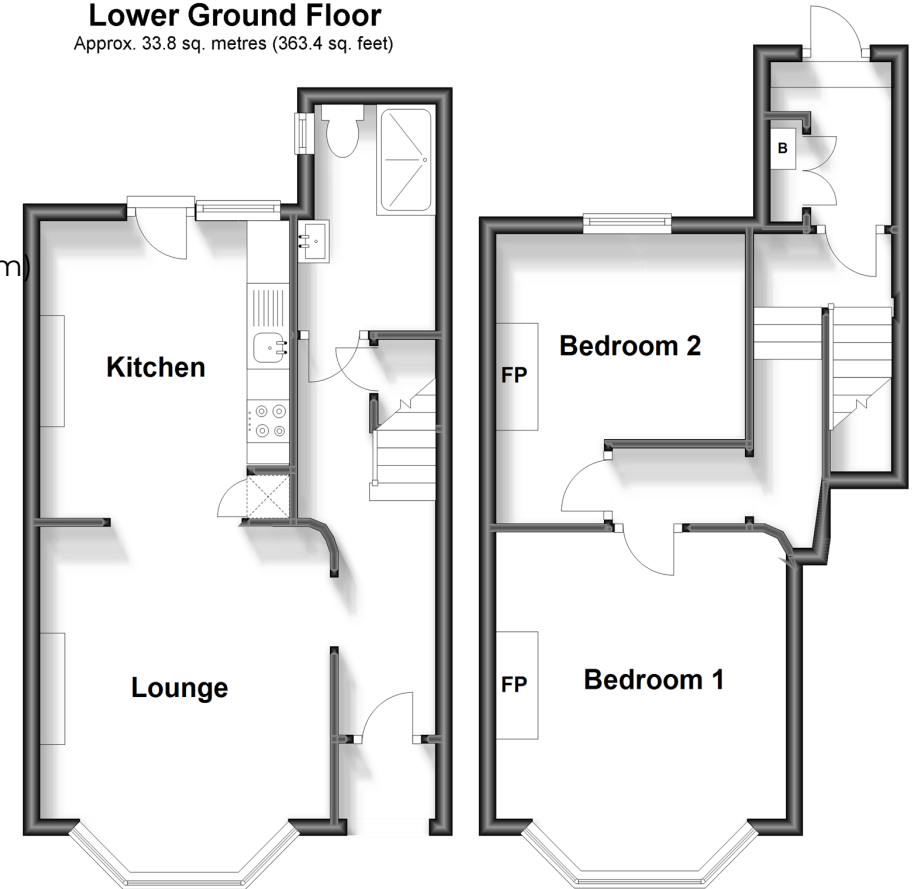
Hallway

Bedroom 1: 15'7 x 11'5 (4.75m x 3.48m)

Bedroom 2: 11'6 x 9'10 (3.51m x 3.00m)

OUTSIDE

Rear Garden



Call Broadstairs - 01843 602546 ■ wardsofkent.co.uk

- A private rental licensing scheme applies to some properties in this area, please contact us before proceeding
- Legal advice should be taken to verify fixtures/fittings, planning, alterations and/or lease details
- Appliances & services are untested, dimensions are approximate and floor plans are not to scale
- Through a Homewise Home For Life Plan people aged 60+ can secure this property for up to 59% less, by purchasing a Lifetime Lease.



10229171/20240104/ER/ATN