



Price
£425,000

Freehold

3x  1x  2x 

**Harrow Dene,
Broadstairs, Kent, CT10**

Wards
Helping you move forwards



Main features

- New driveway offering ample off-street parking
- Integral garage with electric rolling door
- Popular location within walking distance to St Peter's Village and Broadstairs main high street
- Scope to extend (Subject to Planning Permission)

Accommodation

SPLIT LEVEL GROUND FLOOR

Hallway
Cloakroom
Lounge: 15'9 x 11'8 (4.80m x 3.56m)
Dining Area: 10'7 x 9'6 (3.23m x 2.90m)
Kitchen: 10'6 x 10'0 (3.20m x 3.05m)
Utility Room: 11'4 x 7'9 (3.46m x 2.36m)

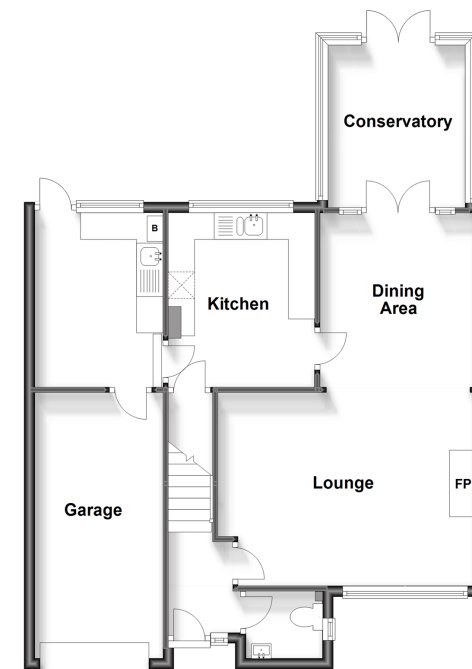
FIRST FLOOR

Landing
Shower Room
Bedroom 1: 12'0 x 8'0 (3.66m x 2.44m)
Bedroom 2: 12'6 x 8'9 (3.81m x 2.67m)
Bedroom 3: 9'6 x 6'7 (2.90m x 2.01m)

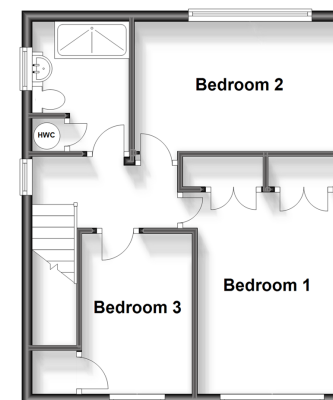
OUTSIDE

Front & Rear Gardens
Garage: 16'8 x 8'4 (5.08m x 2.54m)
Off Road Parking

Split Level Ground Floor
Approx. 73.5 sq. metres (791.1 sq. feet)

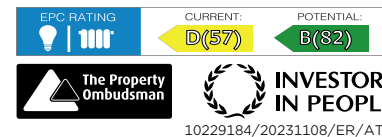


First Floor
Approx. 40.9 sq. metres (439.9 sq. feet)



Call Broadstairs - 01843 602546 ■ wardsofkent.co.uk

- A private rental licensing scheme applies to some properties in this area, please contact us before proceeding
- Legal advice should be taken to verify fixtures/fittings, planning, alterations and/or lease details
- Appliances & services are untested, dimensions are approximate and floor plans are not to scale



10229184/20231108/ER/ATN