



Price
£650,000

Freehold

4x  2x  2x 

**Seapoint Road,
Broadstairs, Kent, CT10**

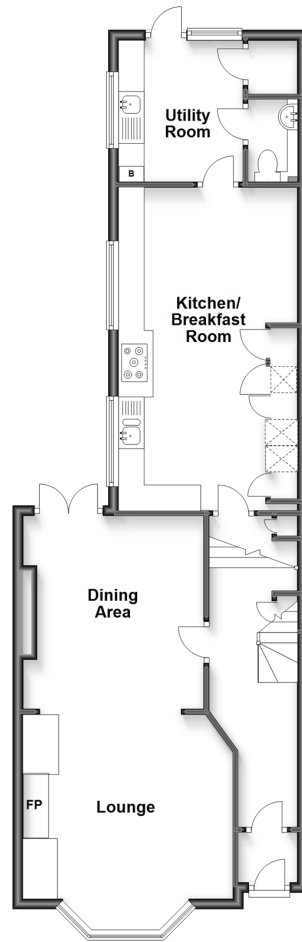
OVER 60?

Secure this property
for up to **59% less!**

Wards
Helping you move forwards

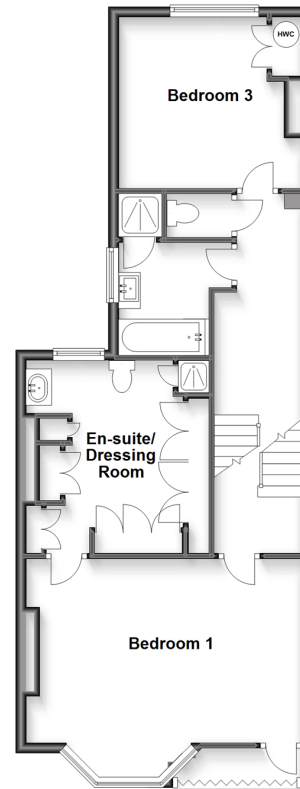
Split Level Ground Floor

Approx. 71.8 sq. metres (772.4 sq. feet)



Split Level First Floor

Approx. 63.6 sq. metres (684.5 sq. feet)



Second Floor

Approx. 23.3 sq. metres (250.3 sq. feet)



Accommodation

GROUND FLOOR

Entrance Porch

Entrance Hallway

Lounge/Dining Area: 27'0 x 12'7 (8.24m x 3.84m)

Kitchen/Breakfast Room: 20'5 x 11'2 (6.23m x 3.41m)

Utility Room: 11'2 x 9'3 (3.41m x 2.82m)

Downstairs Cloakroom

FIRST FLOOR

Landing

Bedroom 1: 17'7 x 14'5 (5.36m x 4.40m)

En-suite Shower/Dressing Room

Bedroom 3: 10'8 x 10'5 (3.25m x 3.18m)

SECOND FLOOR

Landing

Bedroom 2: 12'3 x 10'3 (3.74m x 3.13m)

Study/Bedroom 4: 8'9 x 7'7 (2.67m x 2.31m)

OUTSIDE

Front Garden

Rear Garden



Main features

- Primary bedroom with sea views, dressing room and en-suite
- Lounge/Diner with doors onto the garden
- Within minute's of the beach and town centre
- Immaculately presented
- Original features throughout the property
- Option to turn back to five bedrooms



Nearest Schools

Primary Schools: Holy Trinity CofE 0.8 miles, Upton Junior 1.1 miles, St Joseph's Catholic 1.1 miles. Secondary Schools: Bradstow School 0.3 miles, Hereson School 0.5 miles, Stone Bay School 1.2 miles, Dane Court Grammar 1.4 miles, St George's CofE 1.7 miles



Transport Information

Train Stations: Broadstairs 0.8 miles, Dumpton Park 1.3 miles, Ramsgate 2.5 miles



Address

Seapoint Road, Broadstairs, Kent, CT10



Directions

For directions to this property please contact us.



Wards
Helping you move forwards

Call Broadstairs Branch 01843 602546 ■ wardsofkent.co.uk



- A private rental licensing scheme applies to some properties in this area, please contact us before proceeding
- Appliances & services are untested, dimensions are approximate and floor plans are not to scale

- Legal advice should be taken to verify fixtures/fittings, planning, alterations and/or lease details
- Through a Homewise Home For Life Plan people aged 60+ can secure this property for up to 59% less, by purchasing a Lifetime Lease.



10229193/20231223/LM/ATN