



Price
£300,000

Freehold

2x  1x  1x 

**Dane Court Gardens,
Broadstairs, Kent, CT10**

OVER 60?

Secure this property
for up to **59% less!**

Wards
Helping you move forwards



Main features

- Chain Free
- Large spacious plot
- Garage and off road parking
- Some updating required. Scope to extend (subject to relevant permissions)
- Situated in quiet cul-de-sac, offering good access to local bus routes and village amenities

Accommodation

GROUND FLOOR

Entrance Hallway

Lounge: 17'0 x 11'9 (5.19m x 3.58m)

Garden Room : 14'3 x 6'7 (4.35m x 2.01m)

Bedroom 2: 11'0 x 9'8 (3.36m x 2.95m)

Bedroom 1: 13'7 x 11'9 (4.14m x 3.58m)

Separate Toilet

Bathroom

Kitchen: 10'4 x 9'4 (3.15m x 2.85m)

OUTSIDE

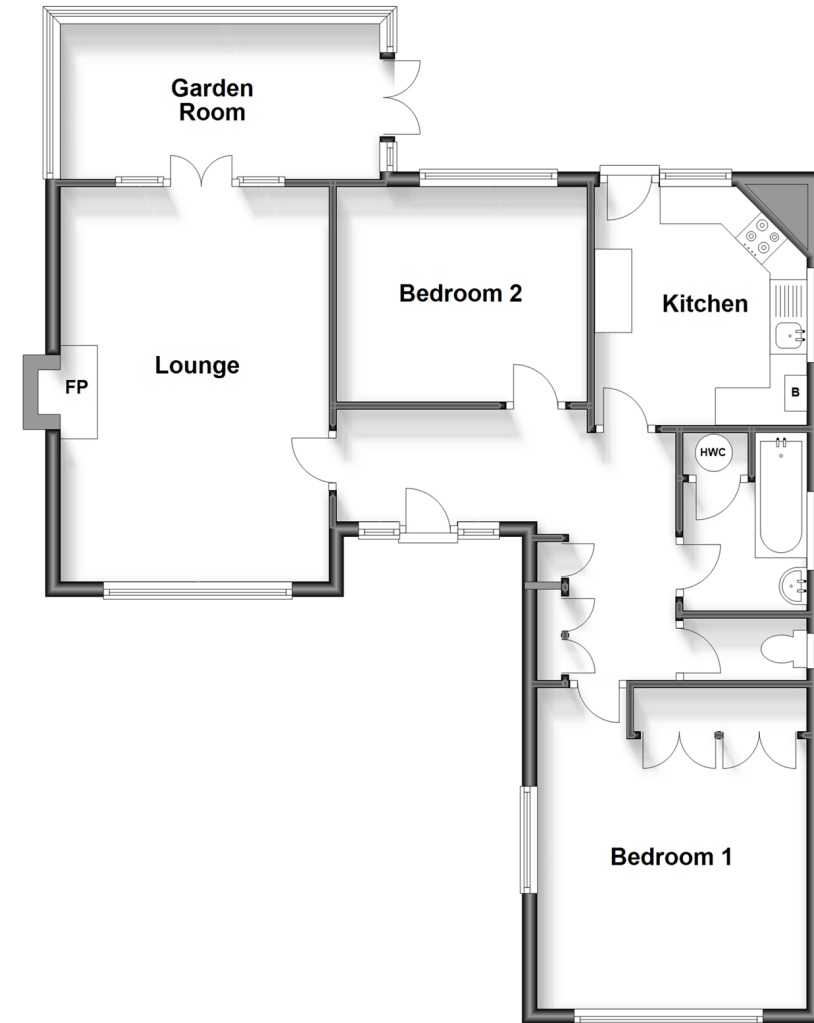
Front Garden

Garage & Off Road Parking

Rear Garden

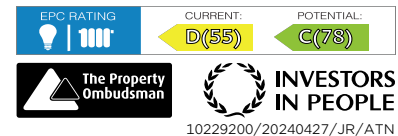
Ground Floor

Approx. 81.4 sq. metres (876.3 sq. feet)



Call Broadstairs - 01843 602546 ■ wardsofkent.co.uk

- A private rental licensing scheme applies to some properties in this area, please contact us before proceeding
- Legal advice should be taken to verify fixtures/fittings, planning, alterations and/or lease details
- Appliances & services are untested, dimensions are approximate and floor plans are not to scale
- Through a Homewise Home For Life Plan people aged 60+ can secure this property for up to 59% less, by purchasing a Lifetime Lease.



10229200/20240427/JR/ATN