



Price
£325,000

Freehold

3x  1x  2x 

**The Maples, Broadstairs,
Kent, CT10**

OVER 60?

Secure this property
for up to **59% less!**

Wards
Helping you move forwards



Main features

- Open plan kitchen/diner
- Garage and off road parking
- Good size corner plot
- Close to Westwood Cross shopping centre
- Within the catchment for top schools in Broadstairs

Accommodation

GROUND FLOOR

Entrance Hallway

Kitchen/Diner: 15'0 x 10'0 (4.58m x 3.05m)

Lounge: 13'11 x 12'0 (4.24m x 3.66m)

Conservatory 1: 12'0 x 7'1 (3.66m x 2.16m)

Conservatory 2: 12'0 x 7'0 (3.66m x 2.14m)

FIRST FLOOR

Landing

Bedroom 2: 9'0 x 9'0 (2.75m x 2.75m)

Bedroom 1: 13'0 x 9'0 (3.97m x 2.75m)

Bedroom 3: 10'10 x 6'0 (3.30m x 1.83m)

Bathroom

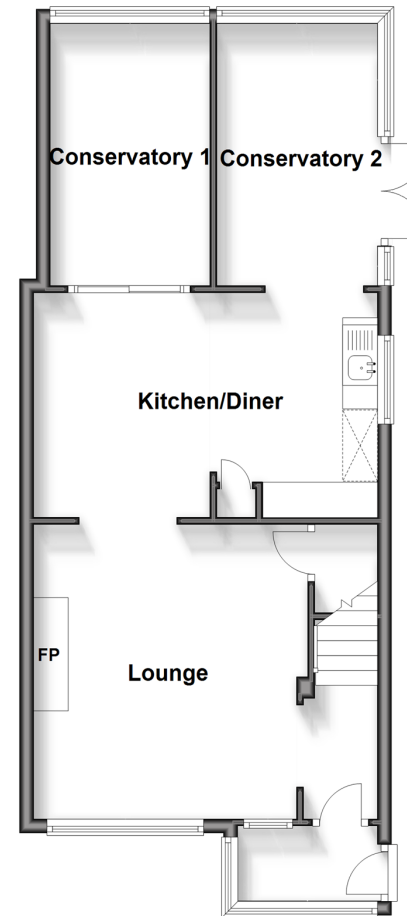
OUTSIDE

Front Garden

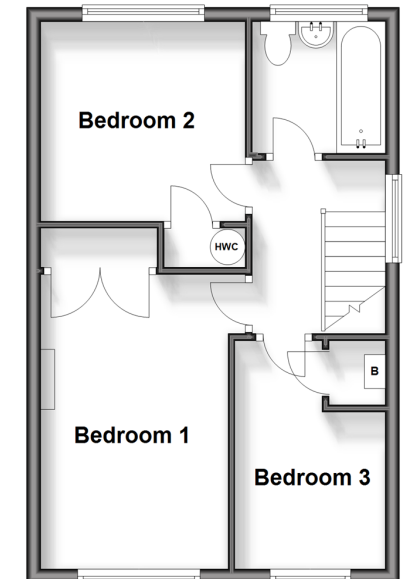
Garage & Off Road Parking

Rear Garden

Ground Floor
Approx. 56.2 sq. metres (604.7 sq. feet)



First Floor
Approx. 38.1 sq. metres (410.4 sq. feet)



Call Broadstairs - 01843 602546 ■ wardsofkent.co.uk

- A private rental licensing scheme applies to some properties in this area, please contact us before proceeding
- Legal advice should be taken to verify fixtures/fittings, planning, alterations and/or lease details
- Appliances & services are untested, dimensions are approximate and floor plans are not to scale
- Through a Homewise Home For Life Plan people aged 60+ can secure this property for up to 59% less, by purchasing a Lifetime Lease.



10229230/20240504/JR/ER