



Price
£625,000

Freehold

4x  3x  3x 

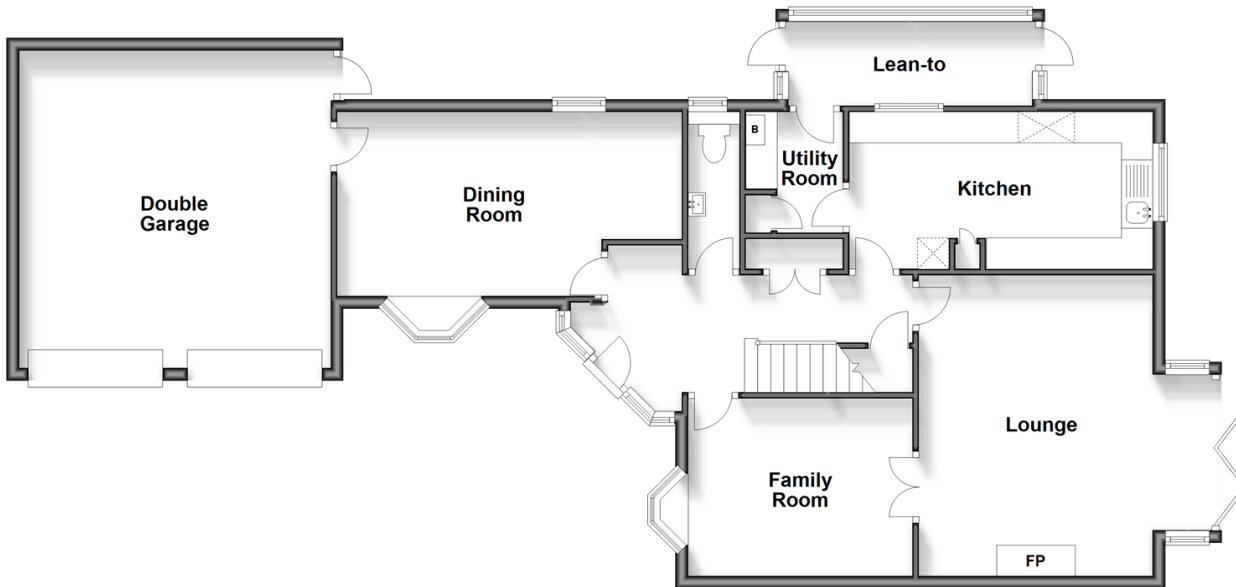
**Cliffside Drive,
Broadstairs, Kent, CT10**

OVER 60?

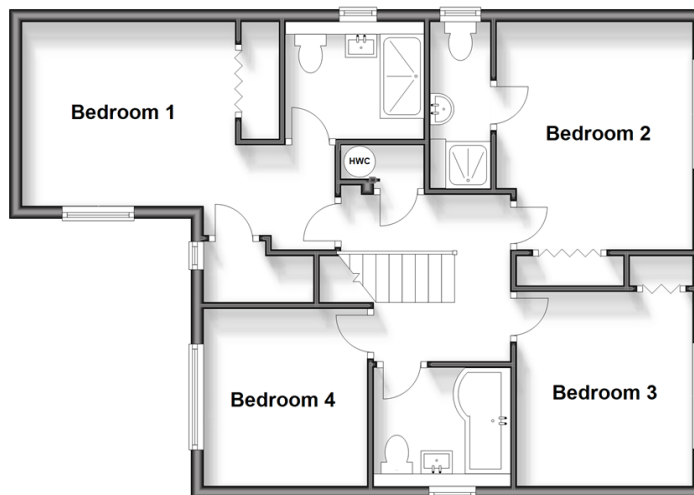
Secure this property
for up to **59% less!**

Wards
Helping you move forwards

Ground Floor
Approx. 108.0 sq. metres (1162.5 sq. feet)



First Floor
Approx. 66.8 sq. metres (719.1 sq. feet)



Accommodation

GROUND FLOOR

Entrance Hallway

Kitchen: 16'6 x 6'9 (5.03m x 2.06m)

Utility Room: 7'0 x 5'0 (2.14m x 1.53m)

Lean To: 12'0 x 4'4 (3.66m x 1.32m)

Downstairs Cloakroom

Family Room : 13'5 x 9'3 (4.09m x 2.82m)

Dining Room: 18'0 x 9'6 (5.49m x 2.90m)

Lounge: 15'8 x 15'7 (4.78m x 4.75m)

FIRST FLOOR

Landing

Bedroom 1: 16'3 x 11'3 (4.96m x 3.43m)

En-suite Shower Room

Bedroom 2: 11'9 x 10'2 (3.58m x 3.10m)

En-suite Shower Room

Bedroom 3: 10'3 x 9'0 (3.13m x 2.75m)

Bedroom 4: 9'3 x 8'4 (2.82m x 2.54m)

Family Bathroom

OUTSIDE

Front Garden

Double Garage & Driveway

Rear Garden



Main features

- Tucked away in a quiet cul-de-sac off Dumpton Park Drive
- Solar Panels
- Integral double garage
- Ample off-road parking
- Primary bedroom offers an en-suite and walk in wardrobe



Nearest Schools

Primary Schools: Holy Trinity C of E 0.2 miles, Newlands 0.9 miles, St Ethelbert's Catholic 1.0 miles
Secondary Schools: Bradstow 0.9 miles, St Lawrence College 1.3 miles, Chatham & Clarendon Grammar 1.4 miles



Transport Information

Train Stations: Dumpton Park 0.5 miles, Broadstairs 1.6 miles, Ramsgate 1.7 miles



Address

Cliffside Drive, Broadstairs, Kent, CT10



Directions

For directions to this property please contact us.



Wards
Helping you move forwards

Call Broadstairs Branch 01843 602546 ■ wardsofkent.co.uk



- A private rental licensing scheme applies to some properties in this area, please contact us before proceeding
- Appliances & services are untested, dimensions are approximate and floor plans are not to scale

- Legal advice should be taken to verify fixtures/fittings, planning, alterations and/or lease details
- Through a Homewise Home For Life Plan people aged 60+ can secure this property for up to 59% less, by purchasing a Lifetime Lease.



10229234/20231230/ER/ATN