

OVER 60?

Secure this property
for up to **59% less!**



Price

£400,000

Freehold

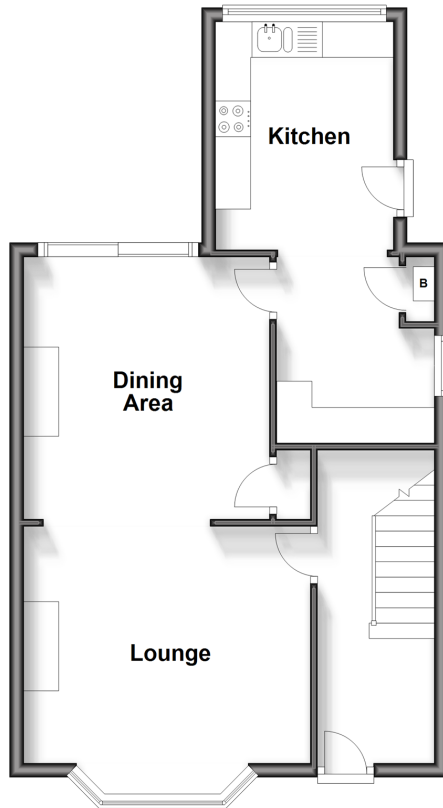
5x  1x  2x 

Westover Road, Broadstairs, Kent, CT10

Wards
Helping you move forwards

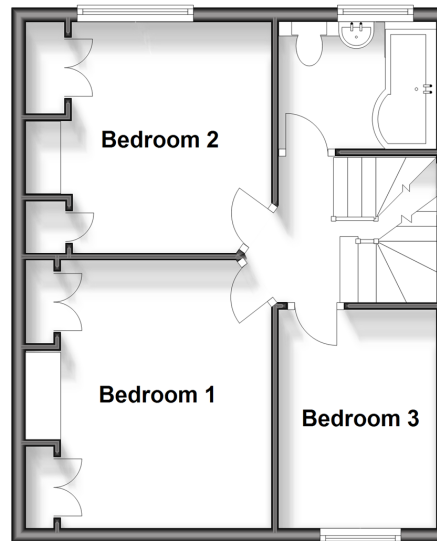
Ground Floor

Approx. 50.1 sq. metres (539.8 sq. feet)



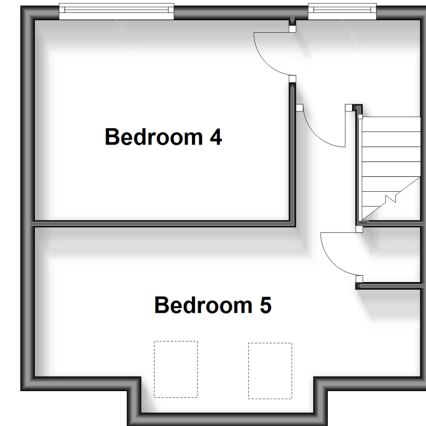
First Floor

Approx. 41.5 sq. metres (446.3 sq. feet)



Second Floor

Approx. 28.7 sq. metres (308.9 sq. feet)



Accommodation

GROUND FLOOR

Entrance Hallway

Lounge: 13'3 x 11'5 (4.04m x 3.48m)

Dining Area: 12'0 x 11'9 (3.66m x 3.58m)

Kitchen: 10'1 x 8'3 (3.08m x 2.52m)

Utility Area: 8'4 x 7'7 (2.54m x 2.31m)

FIRST FLOOR

Landing

Bedroom 1: 10'6 x 10'5 (3.20m x 3.18m)

Bedroom 2: 10'7 x 9'7 (3.23m x 2.92m)

Bedroom 3: 10'6 x 7'4 (3.20m x 2.24m)

SECOND FLOOR

Landing

Bedroom 4: 11'8 x 9'3 (3.56m x 2.82m)

Bedroom 5: 15'7 x 8'4 (4.75m x 2.54m)

OUTSIDE

Front Garden

Rear Garden

Garage



Main features

- Garage to the rear
- Low maintenance rear garden
- Set across three floors
- Open plan lounge/dining area with patio doors onto the garden
- On bus route and within less than a mile of Broadstairs train station



Nearest Schools

Primary Schools: St Peter-in-Thamet CofE 0.3 miles, St Joseph's Catholic 0.6 miles, Upton 1.1 miles. Secondary Schools: Dane Court Grammar 0.9 miles, The Foreland School 0.9 miles, St Anthony's 1.0 miles



Transport Information

Train Stations: Broadstairs 1.0 miles, Dumpton Park 2.3 miles, Ramsgate 2.8 miles



Address

Westover Road, Broadstairs, Kent, CT10



Directions

For directions to this property please contact us.



Call Broadstairs Branch 01843 602546 ■ wardsofkent.co.uk



- A private rental licensing scheme applies to some properties in this area, please contact us before proceeding
- Appliances & services are untested, dimensions are approximate and floor plans are not to scale

- Legal advice should be taken to verify fixtures/fittings, planning, alterations and/or lease details
- Through a Homewise Home For Life Plan people aged 60+ can secure this property for up to 59% less, by purchasing a Lifetime Lease.



10229258/20240318/ATN/ATN