



Price
£680,000

Freehold

4x  2x  2x 

**Harmsworth Gardens,
Broadstairs, Kent, CT10**

OVER 60?

Secure this property
for up to **59% less!**

Wards
Helping you move forwards

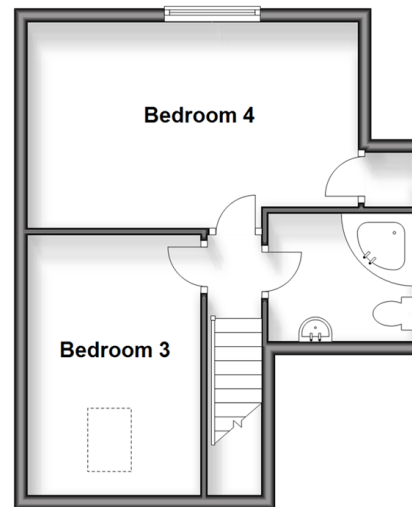
Ground Floor

Approx. 121.3 sq. metres (1305.6 sq. feet)



First Floor

Approx. 35.1 sq. metres (378.1 sq. feet)



Accommodation

GROUND FLOOR

Entrance Porch

Entrance Hallway

Cloakroom

Lounge: 17'3 x 13'7 (5.26m x 4.14m)

Dining Area: 13'7 x 9'7 (4.14m x 2.92m)

Conservatory

Kitchen: 12'1 x 9'8 (3.69m x 2.95m)

Utility Room: 18'3 x 4'0 (5.57m x 1.22m)

Bedroom 2: 16'8 x 9'10 (5.08m x 3.00m)

Bedroom 1: 13'2 x 13'2 (4.02m x 4.02m)

Shower Room

FIRST FLOOR

Landing

Bedroom 3: 16'9 x 11'2 (5.11m x 3.41m)

Bedroom 4: 9'10 x 9'2 (3.00m x 2.80m)

Bathroom

OUTSIDE

Front Garden

Garage & Off Road Parking

Rear Garden



Main features

- Garage and off road parking
- Cul-de-sac location
- Corner plot
- Secluded and sunny wrap-a-round style good size garden
- Central Broadstairs, close to all local amenities and transport links



Nearest Schools

Primary Schools: St Joseph's Catholic, 0.2 miles, Upton Junior 0.4 miles, St Peter-in-Thanel CofE Junior 0.4 miles
Secondary Schools: Stone Bay School 0.3 miles, The Charles Dickens School 0.5 miles



Transport Information

Train Stations: Broadstairs 0.2 miles, Dumpton Park 1.3 miles, Ramsgate 1.9 miles



Address

Harmsworth Gardens, Broadstairs, Kent, CT10



Directions

For directions to this property please contact us.



Call Broadstairs Branch 01843 602546 ■ wardsofkent.co.uk



- A private rental licensing scheme applies to some properties in this area, please contact us before proceeding
- Appliances & services are untested, dimensions are approximate and floor plans are not to scale

- Legal advice should be taken to verify fixtures/fittings, planning, alterations and/or lease details
- Through a Homewise Home For Life Plan people aged 60+ can secure this property for up to 59% less, by purchasing a Lifetime Lease.



10229269/20240419/ER/ER