



OVER 60?

Secure this property
for up to **59% less!**

Price

£475,000

Freehold

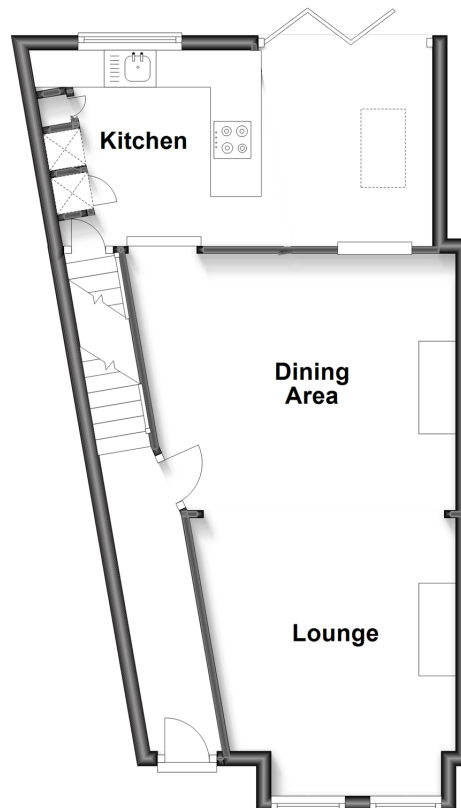
3x  2x  1x 

**Chaucer Road,
Broadstairs, Kent, CT10**

Wards
Helping you move forwards

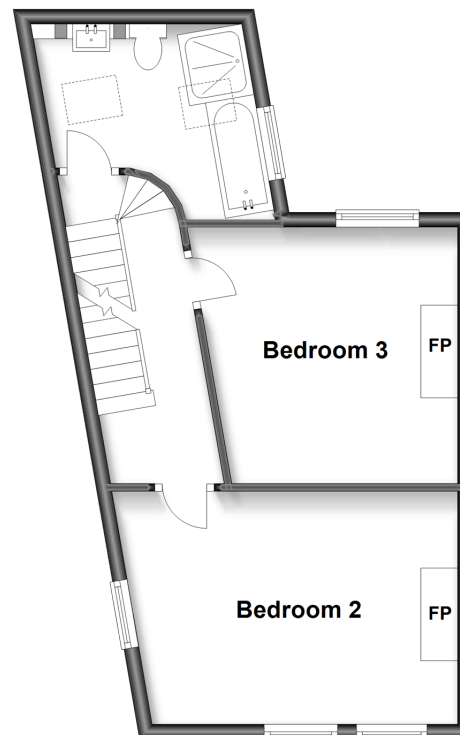
Split Level Ground Floor

Approx. 47.3 sq. metres (508.9 sq. feet)



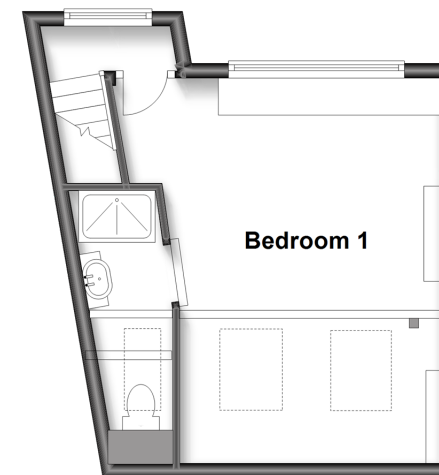
Split Level First Floor

Approx. 39.4 sq. metres (424.1 sq. feet)



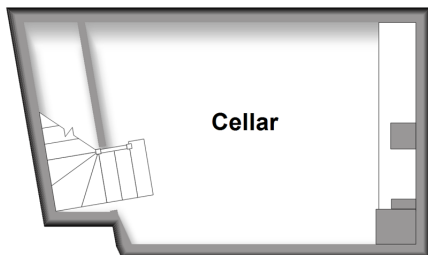
Split Level Second Floor

Approx. 26.4 sq. metres (284.3 sq. feet)



Basement

Approx. 14.7 sq. metres (157.8 sq. feet)



Accommodation

BASEMENT

Cellar

GROUND FLOOR

Entrance Hallway

Lounge/Diner: 22'6 x 13'9 (6.86m x 4.19m)

Kitchen: 17'1 x 9'0 (5.21m x 2.75m)

FIRST FLOOR

Landing

Bedroom 2: 15'0 x 10'6 (4.58m x 3.20m)

Bedroom 3: 12'2 x 11'5 (3.71m x 3.48m)

Bathroom

SECOND FLOOR

Landing

Bedroom 1: 16'4 x 10'5 (4.98m x 3.18m)

En-suite Shower Room

OUTSIDE

Rear Garden



Main features

- Ready to move into, no work required
- Central Broadstairs location
- Walking distance to the beach, town centre and station
- Set across four floors
- Impeccable main bedroom across the top floor with an en-suite shower room



Nearest Schools

Primary Schools: Upton Junior 0.3 miles, Ramsgate, Holy Trinity C of E 0.6 miles, St Joseph's Catholic 0.6 miles. Secondary Schools: Bradstow 0.2 miles, The Charles Dickens 0.6 miles, Dane Court Grammar 0.7 miles, St George's C of E Foundation 1.1 miles



Transport Information

Train Stations: Broadstairs 0.3 miles, Dumpton Park 0.7 miles, Ramsgate 1.5 miles



Address

Chaucer Road, Broadstairs, Kent, CT10



Directions

For directions to this property please contact us.



Wards
Helping you move forwards

Call Broadstairs Branch 01843 602546 ■ wardsofkent.co.uk



- A private rental licensing scheme applies to some properties in this area, please contact us before proceeding
- Appliances & services are untested, dimensions are approximate and floor plans are not to scale

- Legal advice should be taken to verify fixtures/fittings, planning, alterations and/or lease details
- Through a Homewise Home For Life Plan people aged 60+ can secure this property for up to 59% less, by purchasing a Lifetime Lease.



10229273/20240227/JR/ATN