



**Price**  
**£535,000**

**Freehold**

3x  1x  2x 

**Caroline Crescent,  
Broadstairs, Kent, CT10**

**OVER 60?**

Secure this property  
for up to **59% less!**

*Wards*  
Helping you move forwards





## Main features

- Off road parking and garage
- Private rear garden
- Conservatory to rear
- Within catchment area for some of the best schools in Thanet
- Ready to move into, no work required

## Accommodation

### GROUND FLOOR

Entrance Porch  
 Entrance Hallway  
 Lounge: 15'7 x 9'10 (4.75m x 3.00m)  
 Downstairs Cloakroom  
 Kitchen/Diner: 23'8 x 7'10 (7.22m x 2.39m)  
 Conservatory: 18'6 x 9'2 (5.64m x 2.80m)  
 Living Room: 23'9 x 8'1 (7.24m x 2.47m)

### FIRST FLOOR

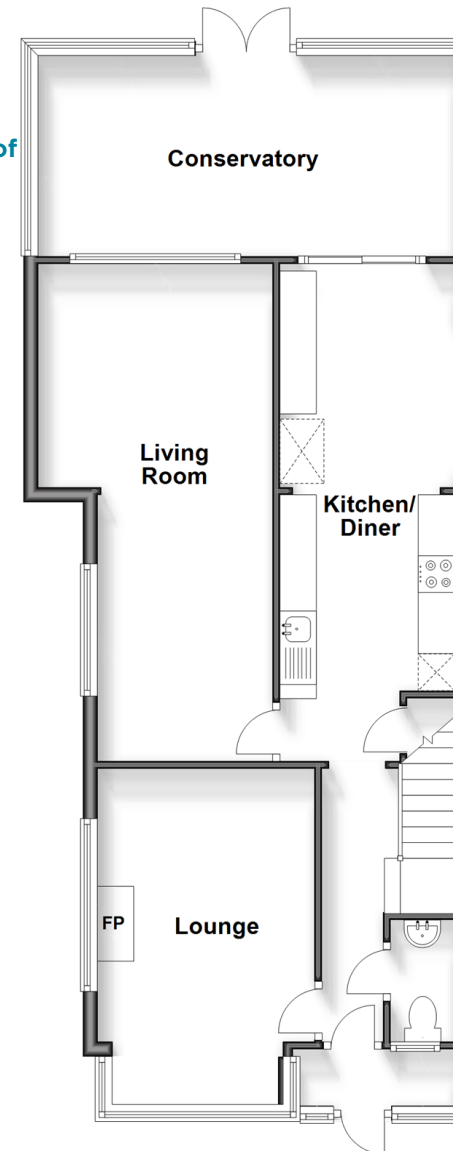
Landing  
 Bedroom 2: 12'1 x 10'2 (3.69m x 3.10m)  
 Bedroom 3: 9'3 x 7'2 (2.82m x 2.19m)  
 Bedroom 1: 12'7 x 8'11 (3.84m x 2.72m)  
 Family Bathroom

### OUTSIDE

Front Garden  
 Garage & Off Road Parking  
 Rear Garden

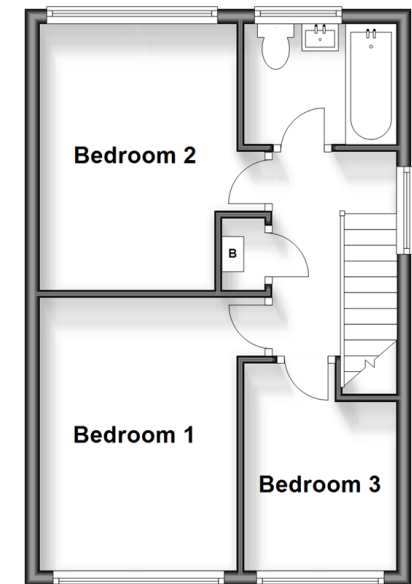
### Ground Floor

Approx. 73.7 sq. metres (793.2 sq. feet)



### First Floor

Approx. 36.6 sq. metres (393.7 sq. feet)



**Call Broadstairs - 01843 602546 ■ [wardsofkent.co.uk](http://wardsofkent.co.uk)**

- A private rental licensing scheme applies to some properties in this area, please contact us before proceeding
- Legal advice should be taken to verify fixtures/fittings, planning, alterations and/or lease details
- Appliances & services are untested, dimensions are approximate and floor plans are not to scale
- Through a Homewise Home For Life Plan people aged 60+ can secure this property for up to 59% less, by purchasing a Lifetime Lease.



10229320/20240504/JR/ER