



Price

£190,000

Leasehold

1x  1x  1x 

**Salisbury House, St.
Thomas Hill, Canterbury,
Kent, CT2**

OVER 60?

You could get up to
59% off the price!*

Wards
Helping you move forwards



Main features

- Charming apartment offered to the market chain free
- Allocated parking
- Walking distance to the city centre and Canterbury West
- Communal gardens
- Ready to move straight into

Accommodation

SPLIT LEVEL UPPER GROUND FLOOR

Entrance Hall

Bedroom: 13'0 x 13'0 (3.97m x 3.97m)

Lounge: 11'9 x 11'9 (3.58m x 3.58m)

Kitchen: 9'5 x 7'0 (2.87m x 2.14m)

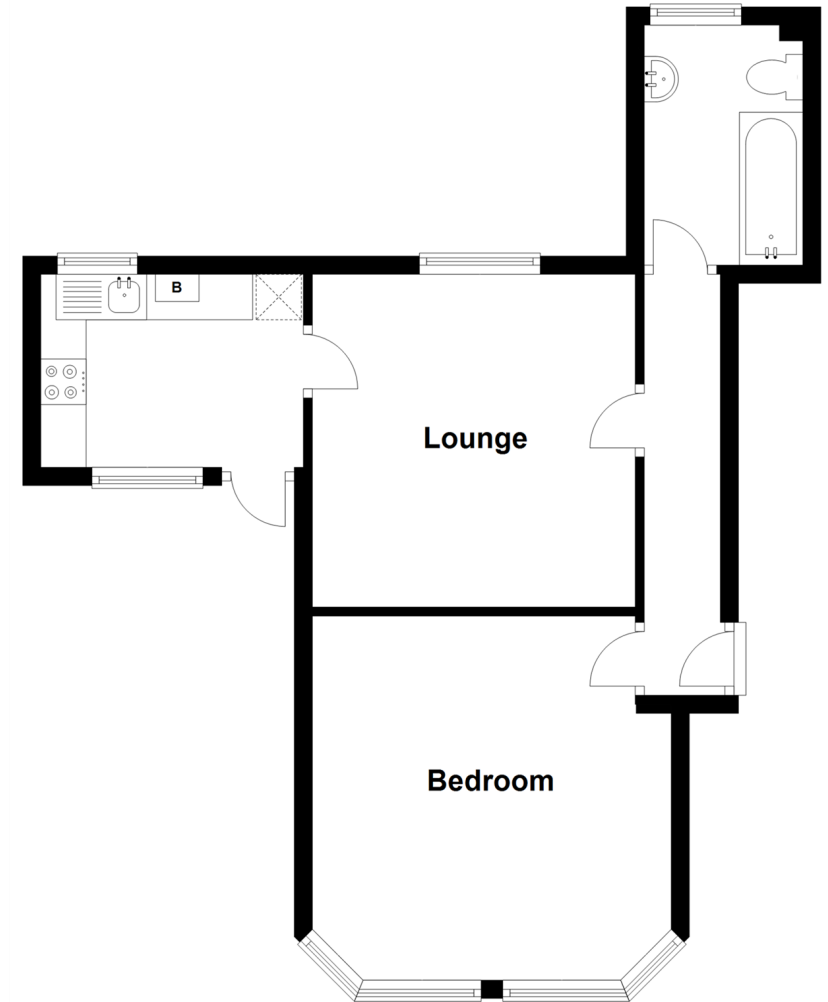
Bathroom: 8'6 x 5'7 (2.59m x 1.70m)

OUTSIDE

Allocated Parking
Communal Garden

Split Level Upper Ground Floor

Approx. 44.0 sq. metres (473.4 sq. feet)



Call Canterbury - 01227 766669 ■ wardsofkent.co.uk

- Legal advice should be taken to verify fixtures/fittings, planning, alterations and/or lease details
- Appliances & services are untested, dimensions are approximate and floor plans are not to scale
- Our Homewise partnership offer a 'Home for Life' plan to buyers over 60, granting a lifetime lease for your protection and reducing the purchase price by up to 59%



10328542/20220816/LP/TD