



Price
£300,000

Freehold

3x  2x  1x 

**Chineham Way,
Canterbury, Kent, CT1**

OVER 60?

Secure this property
for up to **59% less!**

Wards
Helping you move forwards



Main features

- **Integrated garage and allocated parking space**
- **Quiet no through road location**
- **In need of some modernisation**
- **Deceptively spacious townhouse with versatile living space to utilise to your needs**
- **Walking distance to Canterbury East station and the city centre**

Accommodation

GROUND FLOOR

Entrance Hallway
Cloakroom
Kitchen: 15'5 x 12'0 (4.70m x 3.66m)

FIRST FLOOR

Landing
Lounge : 15'6 x 11'3 (4.73m x 3.43m)
Dining Area: 13'5 x 8'10 (4.09m x 2.69m)
Study: 6'4 x 6'3 (1.93m x 1.91m)

SECOND FLOOR

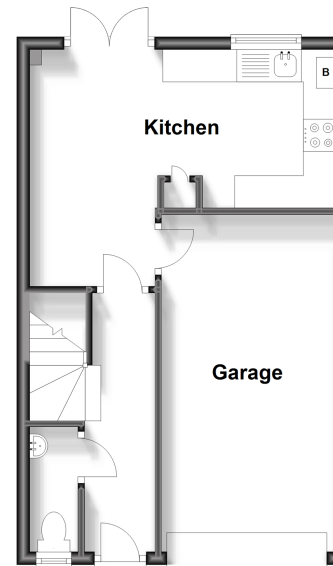
Landing
Bedroom 1: 13'2 x 8'6 (4.02m x 2.59m)
En Suite Shower Room: 6'1 x 3'10 (1.86m x 1.17m)
Bedroom 2: 10'2 x 9'1 (3.10m x 2.77m)
Bedroom 3: 6'11 x 6'1 (2.11m x 1.86m)
Bathroom: 6'0 x 4'10 (1.83m x 1.47m)

OUTSIDE

Integrated Garage
Allocated Parking
Rear Garden

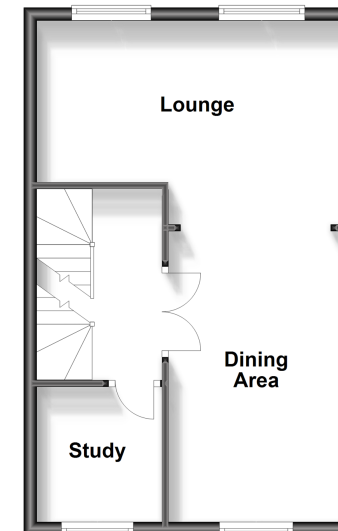
Ground Floor

Approx. 36.8 sq. metres (396.6 sq. feet)



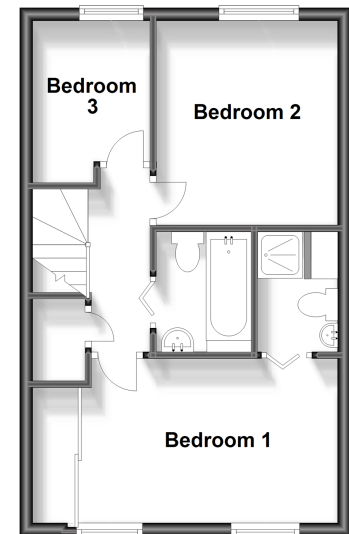
First Floor

Approx. 36.8 sq. metres (396.0 sq. feet)



Second Floor

Approx. 36.8 sq. metres (396.0 sq. feet)



Call Canterbury - 01227 766669 ■ wardsofkent.co.uk

- If buying to let, the energy rating will need to be improved to at least 'E' rating before you can let the property
- Appliances & services are untested, dimensions are approximate and floor plans are not to scale

- Legal advice should be taken to verify fixtures/fittings, planning, alterations and/or lease details
- Through a Homewise Home For Life Plan people aged 60+ can secure this property for up to 59% less, by purchasing a Lifetime Lease.



10332199/20240301/TG/JT