



**Guide Price**  
**£185,000**

**Leasehold**

2x  2x  1x 

**Strangers Lane,  
Canterbury, Kent, CT1**

**OVER 60?**

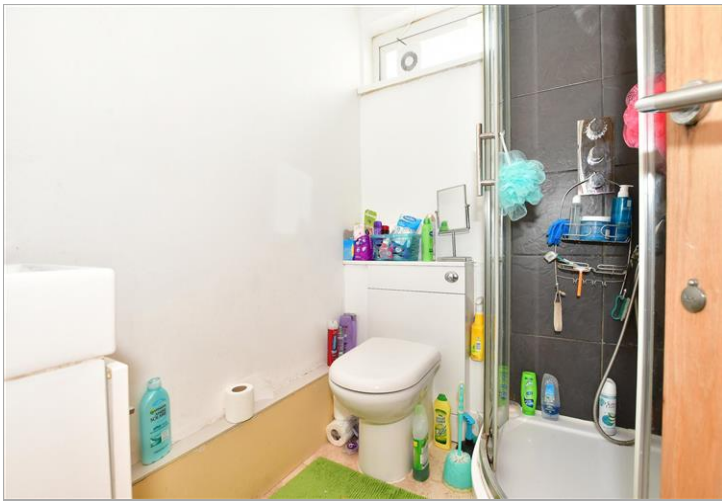
Secure this property  
for up to **59% less!**



**Video Tour available**

*Wards*  
Helping you move forwards





## Main features

- Offered to the market chain free
- Ideal first time purchase or investment opportunity
- Large lounge with kitchenette
- Secondary cooking facilities may affect borrowing sources. Mortgage buyers should seek independent advice before proceeding
- In a quiet residential area

## Accommodation

### FIRST FLOOR

Entrance Hall

Bedroom 1: 13'7 x 10'5 (4.14m x 3.18m)

Bedroom 2: 11'8 x 7'8 (3.56m x 2.34m)

Lounge: 16'0 x 13'7 (4.88m x 4.14m)

Kitchen: 12'7 x 9'1 (3.84m x 2.77m)

Shower Room 1: 5'6 x 4'9 (1.68m x 1.45m)

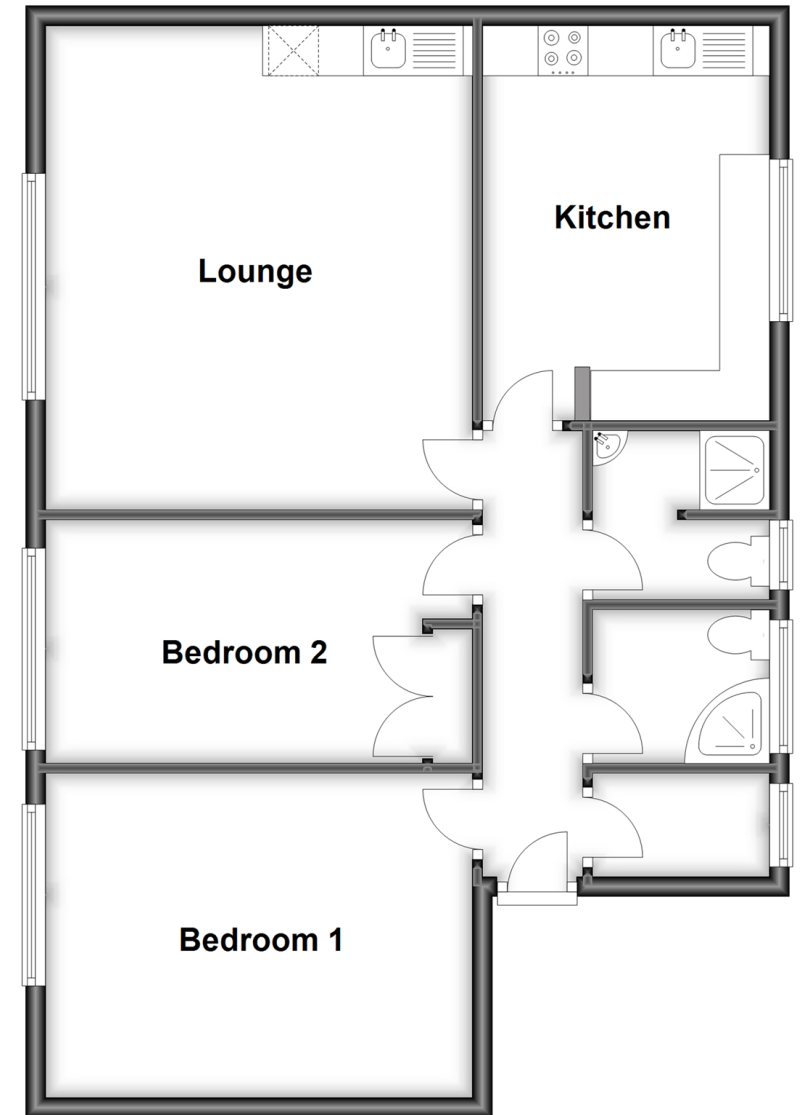
Shower Room 2: 5'6 x 2'6 (1.68m x 0.76m)

### OUTSIDE

Communal Gardens

## Second Floor

Approx. 71.2 sq. metres (766.7 sq. feet)



**Call Canterbury - 01227 766669 ■ [wardsofkent.co.uk](http://wardsofkent.co.uk)**

- Legal advice should be taken to verify fixtures/fittings, planning, alterations and/or lease details
- Appliances & services are untested, dimensions are approximate and floor plans are not to scale
- Through a Homewise Home For Life Plan people aged 60+ can secure this property for up to 59% less, by purchasing a Lifetime Lease.



10335117/20231025/AP/TD