



Price
£550,000

Freehold

4x  3x  2x 

**Beech Avenue,
Chartham, Chartham,
Canterbury, Kent, CT4**

OVER 60?

You could get up to
59% off the price!*

Wards
Helping you move forwards



Main features

- Large high specification kitchen
- Beautifully presented detached family home
- Stunning views of rolling countryside
- Off-road parking for multiple cars
- Highly sought after village location of Chartham

Accommodation

GROUND FLOOR

Entrance Hallway

Lounge: 16'0 x 10'1 (4.88m x 3.08m)

Kitchen/Diner: 23'9 x 9'5 (7.24m x 2.87m)

Cloak Room

Study : 12'4 x 7'5 (3.76m x 2.26m)

FIRST FLOOR

Landing

Bedroom 1: 10'1 x 9'8 (3.08m x 2.95m)

En-Suite Shower Room: 6'5 x 4'2 (1.96m x 1.27m)

Bedroom 2: 9'8 x 7'8 (2.95m x 2.34m)

Bathroom: 6'5 x 5'2 (1.96m x 1.58m)

Bedroom 4: 8'5 x 5'9 (2.57m x 1.75m)

Bedroom 3: 8'5 x 7'8 (2.57m x 2.34m)

OUTSIDE

Driveway

Rear Garden

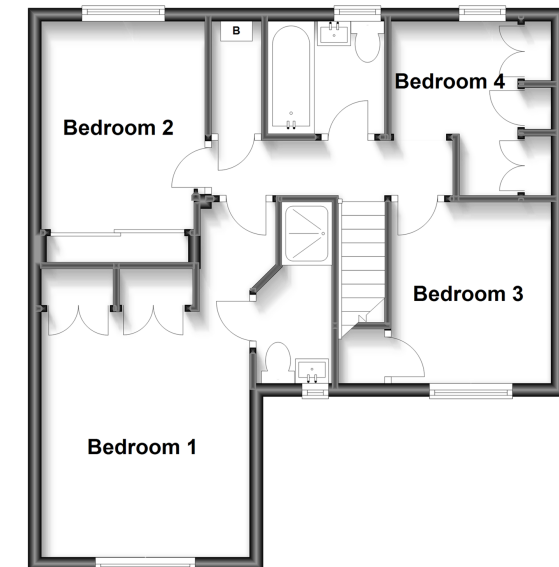
Ground Floor

Approx. 57.0 sq. metres (613.4 sq. feet)



First Floor

Approx. 44.2 sq. metres (476.0 sq. feet)



Call Canterbury - 01227 766669 ■ wardsofkent.co.uk

- Legal advice should be taken to verify fixtures/fittings, planning, alterations and/or lease details
- Appliances & services are untested, dimensions are approximate and floor plans are not to scale
- Our Homewise partnership offer a 'Home for Life' plan to buyers over 60, granting a lifetime lease for your protection and reducing the purchase price by up to 59%



10335613/20221027/TD/TD