



Price
£450,000

Freehold

4x  3x  2x 

**Stonebridge Road,
Canterbury, Kent, CT2**

OVER 60?

Secure this property
for up to **59% less!**

Wards
Helping you move forwards



Main features

- Being sold with no onward chain
- Allocated parking bay
- Two en suite bedrooms
- Adaptable and versatile living space set over three floors
- Light and airy open plan lounge/kitchen with french doors leading onto the private rear garden

Accommodation

GROUND FLOOR

Entrance Hallway
Cloakroom
Kitchen: 11'0 x 7'7 (3.36m x 2.31m)
Lounge/Diner: 18'2 x 14'9 (5.54m x 4.50m)

FIRST FLOOR

Landing
Lounge: 14'9 x 11'0 (4.50m x 3.36m)
Bedroom 1: 14'9 x 10'6 (4.50m x 3.20m)
En-Suite Shower Room

SECOND FLOOR

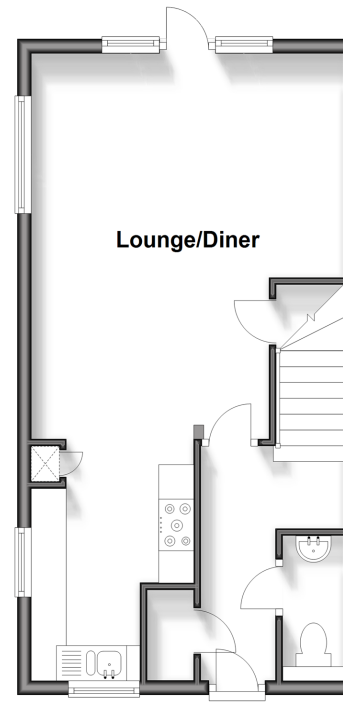
Landing
Bedroom 2: 14'9 x 11'1 (4.50m x 3.38m)
En Suite Shower Room
Bedroom 3: 10'6 x 7'1 (3.20m x 2.16m)
Bedroom 4: 10'6 x 7'1 (3.20m x 2.16m)
Bathroom: 6'10 x 5'6 (2.08m x 1.68m)

OUTSIDE

Rear Garden
Allocated Parking Bay

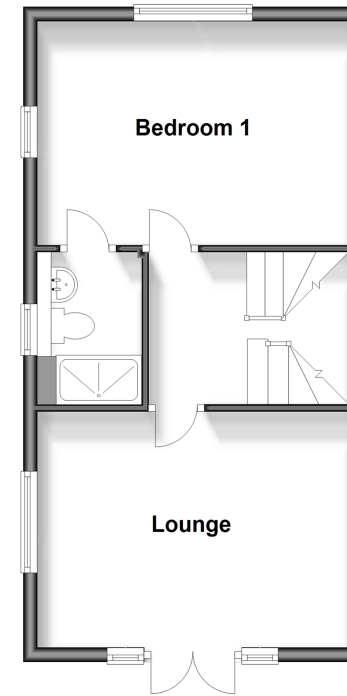
Ground Floor

Approx. 39.7 sq. metres (426.8 sq. feet)



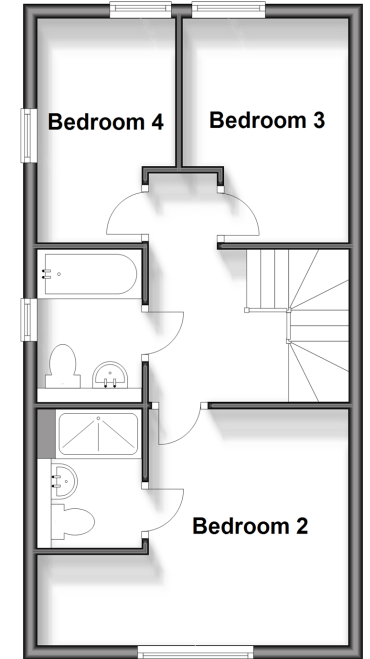
First Floor

Approx. 39.6 sq. metres (426.4 sq. feet)



Second Floor

Approx. 39.7 sq. metres (427.5 sq. feet)



Call Canterbury - 01227 766669 ■ wardsofkent.co.uk

- Legal advice should be taken to verify fixtures/fittings, planning, alterations and/or lease details
- Through a Homewise Home For Life Plan people aged 60+ can secure this property for up to 59% less, by purchasing a Lifetime Lease.

- Appliances & services are untested, dimensions are approximate and floor plans are not to scale



10339655/20240417/TG/JT