



Price
£630,000

Freehold

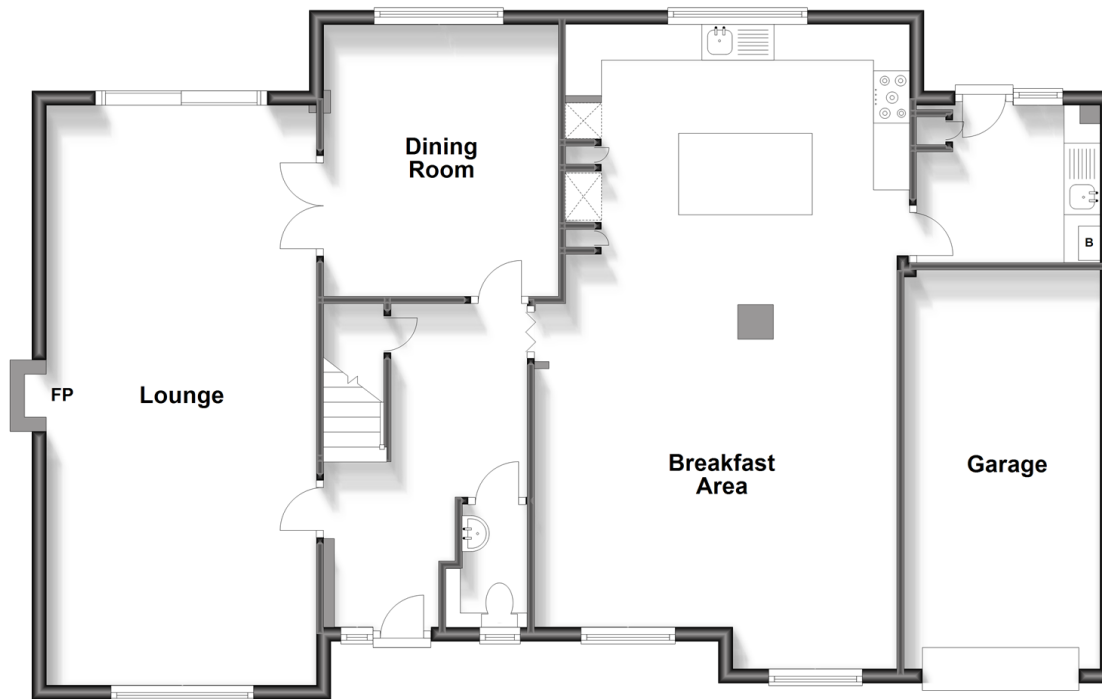
5x  3x  2x 

**Pennington Close,
Westbere, Canterbury,
Kent, CT2**

Wards
Helping you move forwards

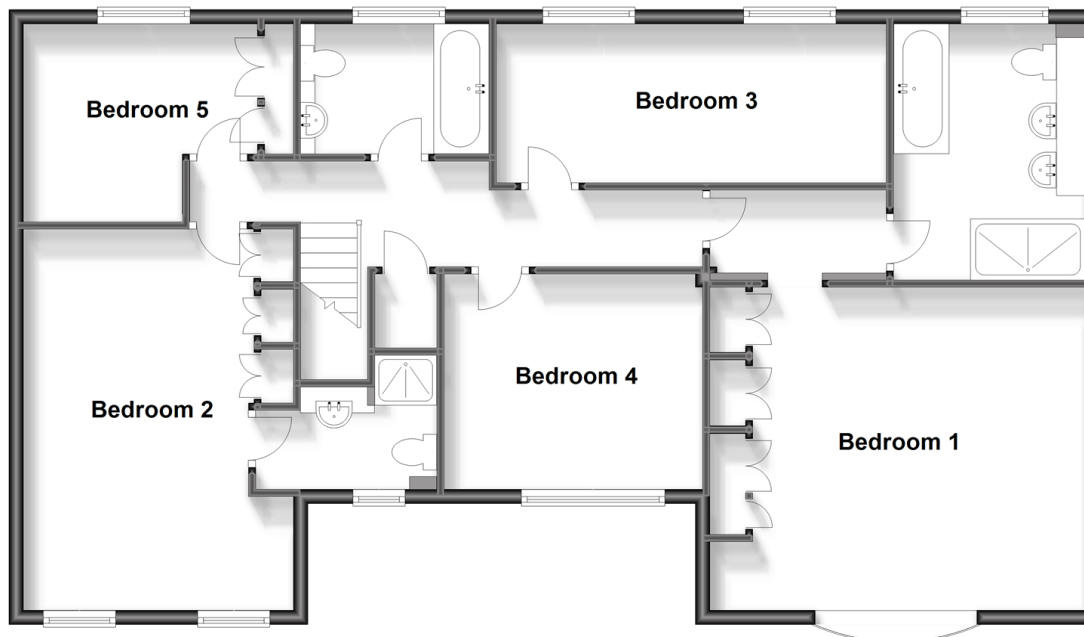
Ground Floor

Approx. 122.1 sq. metres (1314.0 sq. feet)



First Floor

Approx. 111.3 sq. metres (1197.6 sq. feet)



Accommodation

GROUND FLOOR

Entrance Hallway: 14'8 x 6'4 (4.47m x 1.93m)

Cloakroom: 5'6 x 3'7 (1.68m x 1.09m)

Lounge: 26'6 x 12'2 (8.08m x 3.71m)

Dining Room: 12'4 x 10'6 (3.76m x 3.20m)

Kitchen/Breakfast Area: 29'9 x 15'0 (9.07m x 4.58m)

Utility Room: 8'3 x 7'3 (2.52m x 2.21m)

FIRST FLOOR

Landing

Bedroom 1: 16'8 x 14'7 (5.08m x 4.45m)

En Suite Bathroom: 11'7 x 8'6 (3.53m x 2.59m)

Bedroom 2: 17'9 x 7'3 (5.41m x 2.21m)

En Suite Shower Room: 8'6 x 5'2 (2.59m x 1.58m)

Bedroom 3: 11'9 x 9'8 (3.58m x 2.95m)

Bedroom 4: 17'3 x 10'2 (5.26m x 3.10m)

Bedroom 5: 10'3 x 9'0 (3.13m x 2.75m)

Bathroom: 8'6 x 6'0 (2.59m x 1.83m)

OUTSIDE

Front Garden

Driveway

Garage: 18'1 x 8'3 (5.52m x 2.52m)

Rear Garden



Main features

- Chain free
- Driveway parking and a garage
- Quiet cul de sac location
- Large secure outbuildings with potential for a range of uses
- Highly sought after village of Westbere and a short drive to Sturry, Canterbury and Thanet coastal towns



Nearest Schools

Primary Schools: Hersden Community Primary 0.7 miles, Sturry C of E Primary 0.8 miles, Hoath Primary 1.9 miles

Secondary Schools: Spires Academy 0.3 miles, The Archbishop's School 3.1 miles



Transport Information

Train Stations: Sturry 1.3 miles, Canterbury West 3.4 miles, Canterbury East 3.8 miles



Address

Pennington Close, Westbere, Canterbury, Kent, CT2



Directions

For directions to this property please contact us.



Call Canterbury Branch 01227 766669 ■ wardsofkent.co.uk



■ Legal advice should be taken to verify fixtures/fittings, planning, alterations and/or lease details ■ Appliances & services are untested, dimensions are approximate and floor plans are not to scale



10342037/20231009/AMY/TD