



Price

£290,000

Leasehold

3x  2x  1x 

**George Roche Road,
Canterbury, Kent, CT1**

OVER 60?

Secure this property
for up to **59% less!**

Wards
Helping you move forwards



Main features

- Incredibly spacious ground floor apartment
- Allocated parking space plus visitor parking
- Courtyard patio garden area
- Excellent location on the cusp of the city centre
- Converted hospital building full of charm and character

Accommodation

GROUND FLOOR

Entrance Hallway: 21'10 x 6'9 (6.66m x 2.06m)

Bedroom 3: 8'5 x 6'3 (2.57m x 1.91m)

Bedroom 2: 14'5 x 9'9 (4.40m x 2.97m)

Bathroom: 9'8 x 5'5 (2.95m x 1.65m)

Bedroom 1: 14'5 x 9'3 (4.40m x 2.82m)

En Suite Shower Room: 6'4 x 4'3 (1.93m x 1.30m)

Kitchen: 17'1 x 9'7 (5.21m x 2.92m)

Lounge: 14'1 x 13'5 (4.30m x 4.09m)

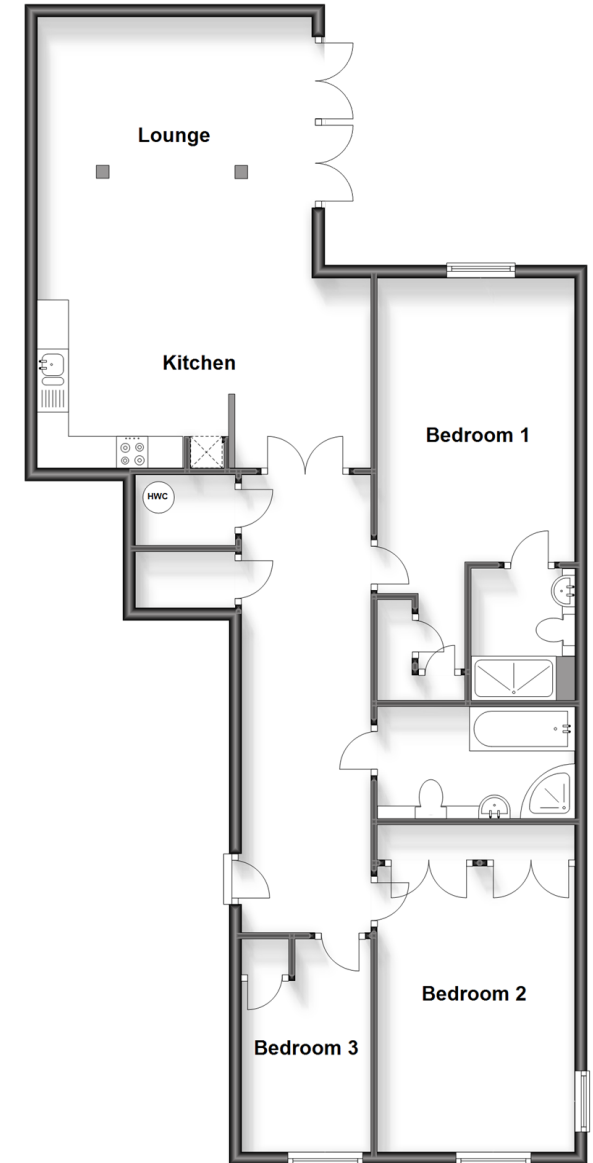
OUTSIDE

Allocated Parking Space

Rear Courtyard Patio Area

Ground Floor

Approx. 105.4 sq. metres (1134.1 sq. feet)



Call Canterbury - 01227 766669 ■ wardsofkent.co.uk

- Legal advice should be taken to verify fixtures/fittings, planning, alterations and/or lease details
- Appliances & services are untested, dimensions are approximate and floor plans are not to scale
- Through a Homewise Home For Life Plan people aged 60+ can secure this property for up to 59% less, by purchasing a Lifetime Lease.



10343365/20230808/TG/AH