



Price
£425,000

Freehold

4x  3x  1x 

**Rowan Close, Sturry,
Canterbury, Kent, CT2**

OVER 60?

Secure this property
for up to **59% less!**

Wards
Helping you move forwards



Main features

- Tucked away in a prime cul de sac in Sturry
- Extremely sociable home with a big kitchen/breakfast room
- Lovely sunny rear garden
- Extended space set up as an annex with its own garden space
- Close to lots of amenities and transport links

Accommodation

GROUND FLOOR

Entrance Hallway

Bedroom : 10'4 x 6'9 (3.15m x 2.06m)

En Suite Shower Room: 6'8 x 4'3 (2.03m x 1.30m)

Kitchen/Family Room: 15'7 x 10'2 (4.75m x 3.10m)

Lounge: 15'9 x 11'5 (4.80m x 3.48m)

Kitchen/Breakfast Area: 15'3 x 9'5 (4.65m x 2.87m)

Dining Area: 15'7 x 7'4 (4.75m x 2.24m)

FIRST FLOOR

Landing

Bedroom 1: 9'4 x 9'1 (2.85m x 2.77m)

En Suite Shower Room: 10'1 x 7'4 (3.08m x 2.24m)

Bedroom 2: 14'7 x 8'8 (4.45m x 2.64m)

Bedroom 3: 15'7 x 10'1 (4.75m x 3.08m)

Bathroom: 6'8 x 6'4 (2.03m x 1.93m)

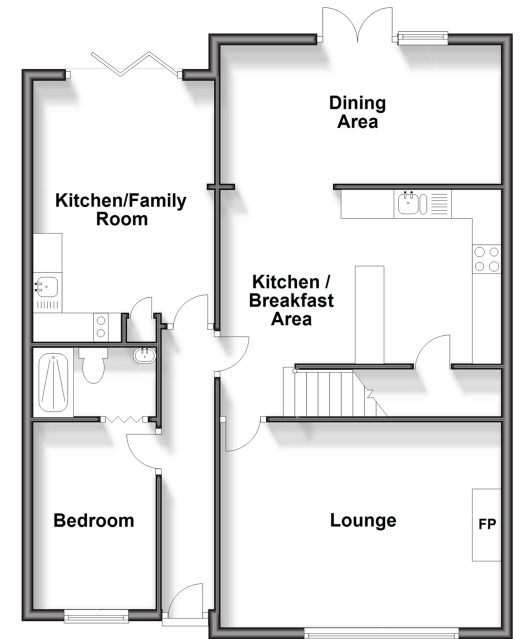
OUTSIDE

Front Garden

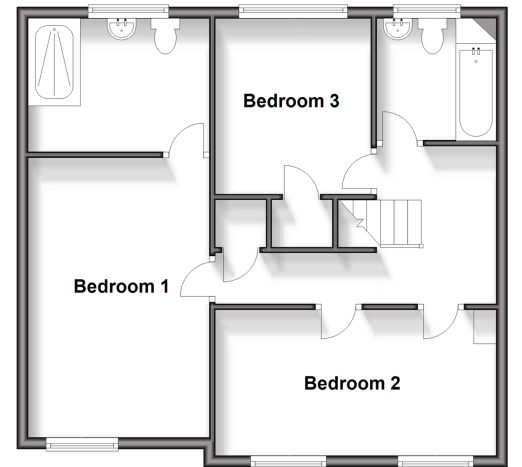
Off Road Parking

Rear Garden

Ground Floor
Approx. 78.8 sq. metres (848.3 sq. feet)



First Floor
Approx. 60.5 sq. metres (651.3 sq. feet)



Call Canterbury - 01227 766669 ■ wardsof Kent.co.uk

- Legal advice should be taken to verify fixtures/fittings, planning, alterations and/or lease details
- Appliances & services are untested, dimensions are approximate and floor plans are not to scale
- Through a Homewise Home For Life Plan people aged 60+ can secure this property for up to 59% less, by purchasing a Lifetime Lease.



10346615/20240205/TG/MW