



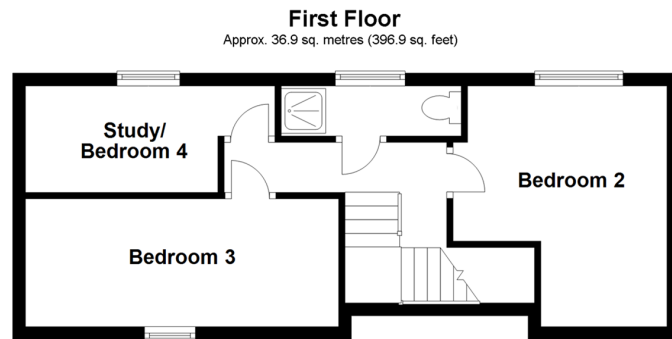
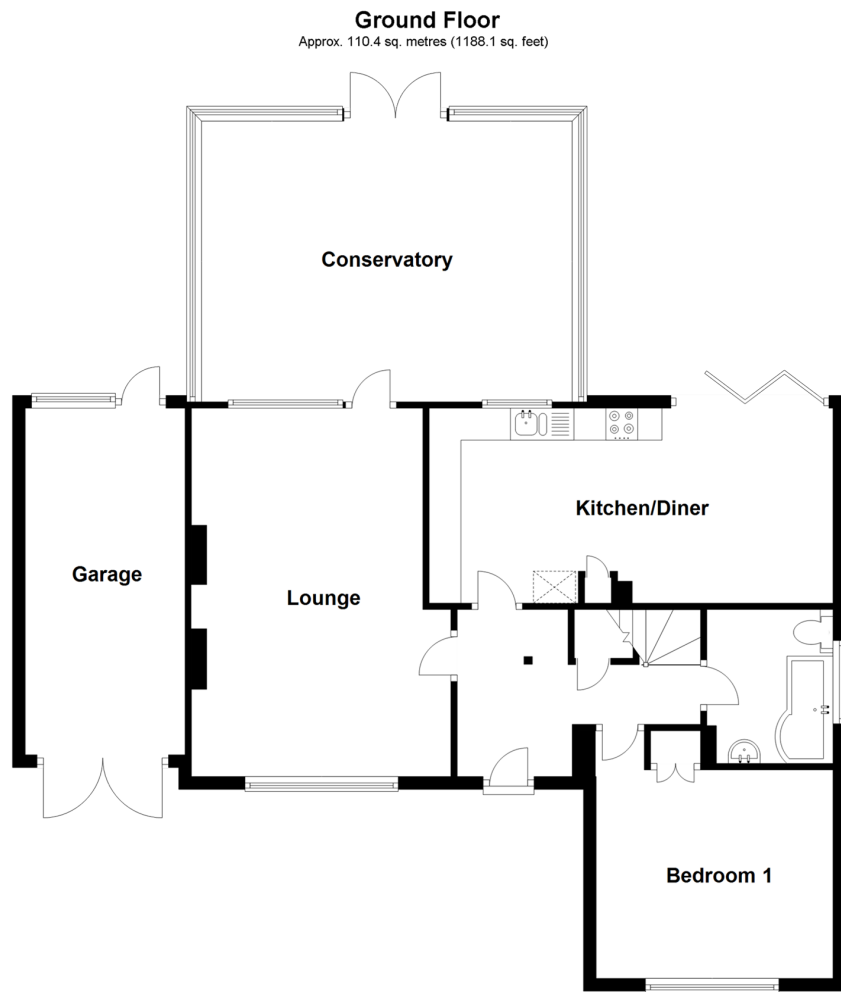
Price
£465,000

Freehold

4x  2x  2x 

**Richdore Road,
Waltham, Canterbury,
Kent, CT4**

Wards
Helping you move forwards



Accommodation

GROUND FLOOR

Entrance Hall

Lounge : 18'9 x 11'9 (5.72m x 3.58m)

Kitchen/Diner: 20'7 x 15'11 (6.28m x 4.85m)

Bedroom 1 : 12'4 x 10'7 (3.76m x 3.23m)

Conservatory : 20'7 x 15'11 (6.28m x 4.85m)

Bathroom

FIRST FLOOR

Landing

Bedroom 2: 12'3 x 9'6 (3.74m x 2.90m)

Bedroom 3 : 16'0 x 6'1 (4.88m x 1.86m)

Study/Bedroom 4 : 9'2 x 5'7 (2.80m x 1.70m)

Shower Room

OUTSIDE

Driveway

Garage

Front Garden

Rear Garden

Summer House



Main features

- Picturesque village location of Waltham
- Sizeable solid roof conservatory providing extra living space
- Garage and driveway parking for multiple cars
- Large summer house with power
- Great sized well maintained rear garden with lawn, patio and decking area



Nearest Schools

Primary Schools: Bodsham C of E Primary 1.7 miles, Petham Primary 2.2 miles

Secondary Schools: Canterbury Steiner School Ltd 3.0 miles, Hope View School 3.6 miles



Transport Information

Train Stations: Chilham 3.6 miles, Chartham 4.0 miles, Canterbury East 5.9 miles



Address

Richdore Road, Waltham, Canterbury, Kent, CT4



Directions

For directions to this property please contact us.



Call Canterbury Branch 01227 766669 ■ wardsofkent.co.uk



■ Legal advice should be taken to verify fixtures/fittings, planning, alterations and/or lease details ■ Appliances & services are untested, dimensions are approximate and floor plans are not to scale



10347370/20220121/DM/TD