



Price
£525,000

Freehold

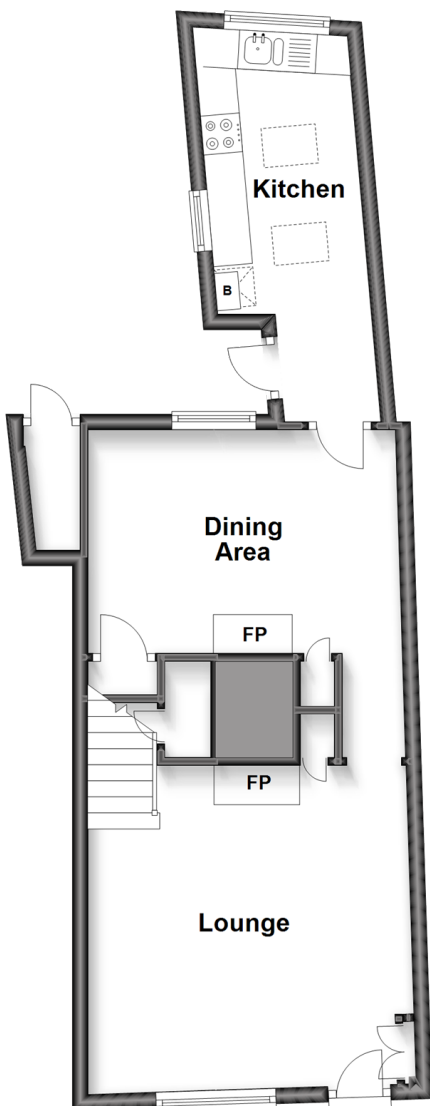
3x  1x  2x 

**Best Lane, Canterbury,
Kent, CT1**

Wards
Helping you move forwards

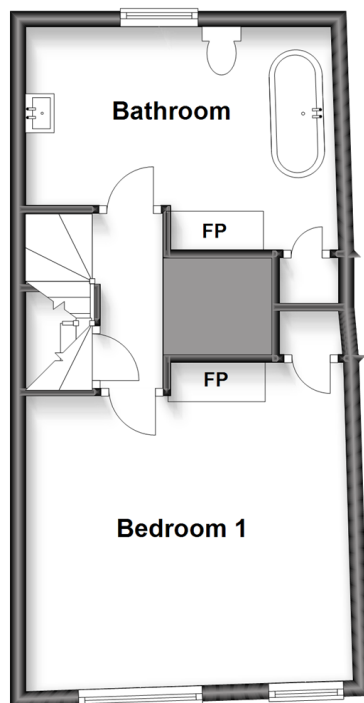
Ground Floor

Approx. 44.7 sq. metres (481.3 sq. feet)



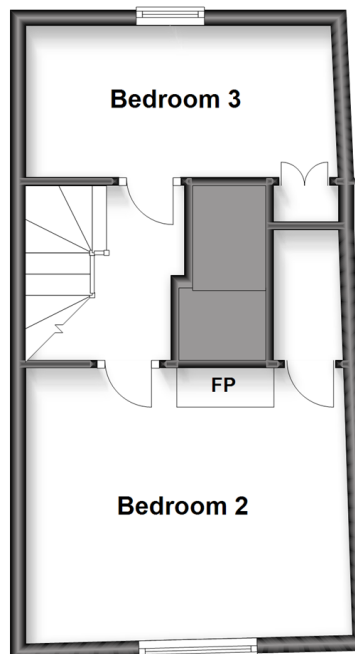
First Floor

Approx. 34.5 sq. metres (371.5 sq. feet)



Second Floor

Approx. 32.1 sq. metres (346.1 sq. feet)



Accommodation

GROUND FLOOR

Entrance Hallway

Kitchen: 15'9 x 6'3 (4.80m x 1.91m)

Dining Area: 12'4 x 8'7 (3.76m x 2.62m)

Lounge: 13'8 x 13'3 (4.17m x 4.04m)

FIRST FLOOR

Landing

Bathroom: 12'6 x 9'0 (3.81m x 2.75m)

Bedroom 1: 13'4 x 13'2 (4.07m x 4.02m)

SECOND FLOOR

Landing

Bedroom 3: 13'3 x 6'3 (4.04m x 1.91m)

Bedroom 2 : 14'0 x 11'7 (4.27m x 3.53m)

OUTSIDE

Rear Garden



Main features

- Chain Free
- Recently renovated grade II listed townhouse
- Within the City Walls
- Walled garden
- Stones throw from Canterbury High Street



Nearest Schools

Primary Schools: St Peter's Methodist Primary 0.3 miles, Diocesan and Payne Smith C of E Primary 0.3 miles, Kingsmead Primary 0.3 miles

Secondary Schools: The King's School Canterbury 0.3



Transport Information

Train Stations: Canterbury West 0.4 miles, Canterbury East 0.8 miles, Sturry 2.1 miles



Address

Best Lane, Canterbury, Kent, CT1



Directions

For directions to this property please contact us.



Wards
Helping you move forwards

Call Canterbury Branch 01227 766669 ■ wardsofkent.co.uk



■ Legal advice should be taken to verify fixtures/fittings, planning, alterations and/or lease details ■ Appliances & services are untested, dimensions are approximate and floor plans are not to scale



10347622/20221031/AT/TD