



Guide Price
£475,000

Freehold

3x  1x  3x 

**Beverley Road,
Canterbury, Kent, CT2**

OVER 60?

You could get up to
59% off the price!*

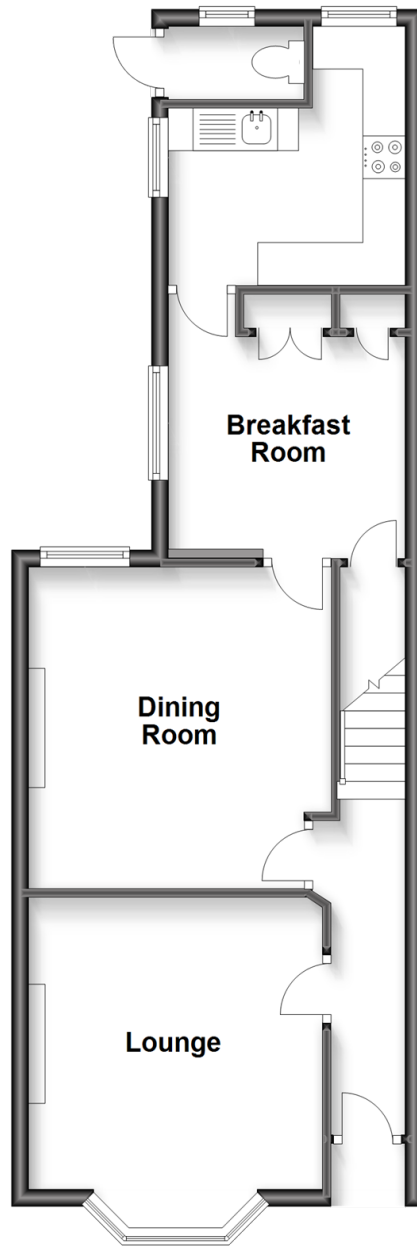


Video Tour available

Wards
Helping you move forwards

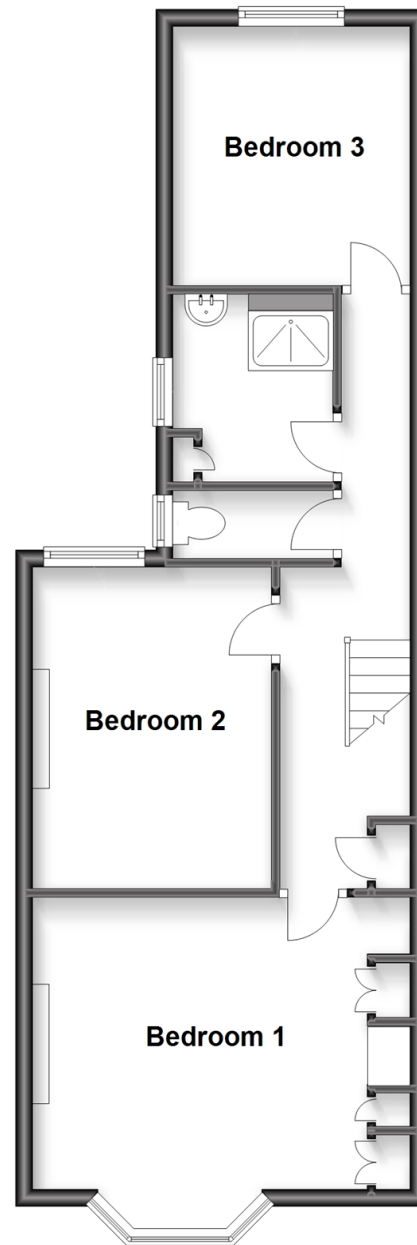
Ground Floor

Approx. 49.9 sq. metres (536.6 sq. feet)



First Floor

Approx. 50.5 sq. metres (543.3 sq. feet)



Accommodation

GROUND FLOOR

Entrance Hallway

Lounge: 11'1 x 11'1 (3.38m x 3.38m)

Dining Room: 12'1 x 11'1 (3.69m x 3.38m)

Breakfast Room : 9'1 x 8'8 (2.77m x 2.64m)

Kitchen: 9'5 x 6'5 (2.87m x 1.96m)

Cloak Room 1

FIRST FLOOR

Landing

Bedroom 3: 9'8 x 9'1 (2.95m x 2.77m)

Shower Room: 6'5 x 6'2 (1.96m x 1.88m)

Cloak Room 2

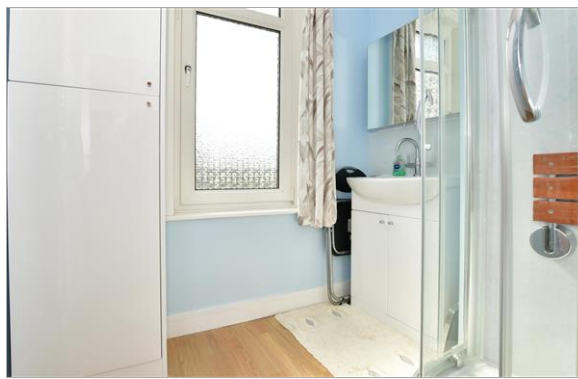
Bedroom 2: 12'1 x 9'1 (3.69m x 2.77m)

Bedroom 1: 14'4 x 11'1 (4.37m x 3.38m)

OUTSIDE

Garage

Rear garden



Main features

- Sizeable semi-detached Period home with 3 reception rooms
- Prime location of Beverley road
- Within walking distance to Canterbury city centre and Canterbury West train station
- Close to the attractive Beverley Meadow
- Within the catchment are for multiple reputable schools



Nearest Schools

Primary Schools: St Stephen's Junior School 0.4 miles, Kingsmead Primary 0.4 miles, St Peter's Methodist Primary 0.4 miles

Secondary Schools: The Archbishop's School 0.4 miles,

Transport Information

Train Stations: Canterbury West 0.2 miles, Canterbury East 0.8 miles, Sturry 2.0 miles

Address

Beverley Road, Canterbury, Kent, CT2

Directions

For directions to this property please contact us.





Wards
Helping you move forwards

Call Canterbury Branch 01227 766669 ■ wardsofkent.co.uk



- Legal advice should be taken to verify fixtures/fittings, planning, alterations and/or lease details
- Appliances & services are untested, dimensions are approximate and floor plans are not to scale
- Our Homewise partnership offer a 'Home for Life' plan to buyers over 60, granting a lifetime lease for your protection and reducing the purchase price by up to 59%



10347773/20221026/TD/TD