



**OVER 60?**

Secure this property  
for up to **59% less!**

**Price**  
**£500,000**

**Freehold**

3x  2x  2x 

**Lochee Villas,  
Railway Hill, Barham,  
Canterbury, Kent, CT4**

*Wards*  
Helping you move forwards





## Main features

- Being sold with no onward chain
- Charming character home with original features
- Overlooking the causeway
- Located in the sought after village of Barham
- Potential to create your dream family home to live in for years to come

## Accommodation

### GROUND FLOOR

Entrance Lobby  
 Lounge: 13'9 x 11'11 (4.19m x 3.63m)  
 Dining Room: 12'2 x 9'10 (3.71m x 3.00m)  
 Kitchen: 10'11 x 8'6 (3.33m x 2.59m)  
 Breakfast Area: 12'5 x 8'6 (3.79m x 2.59m)  
 Utility Room: 7'10 x 2'9 (2.39m x 0.84m)  
 Bathroom: 7'5 x 6'4 (2.26m x 1.93m)

### FIRST FLOOR

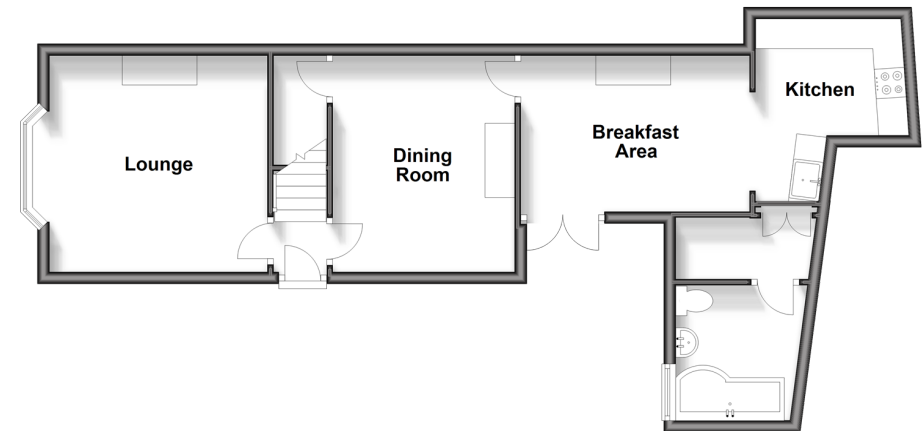
Landing  
 Bedroom 1: 12'7 x 12'0 (3.84m x 3.66m)  
 Bedroom 2: 9'11 x 9'8 (3.02m x 2.95m)  
 Bedroom 3: 9'4 x 6'4 (2.85m x 1.93m)  
 Shower Room: 5'10 x 5'7 (1.78m x 1.70m)

### OUTSIDE

Driveway  
 Front Garden  
 Rear Garden

### Ground Floor

Approx. 53.1 sq. metres (571.8 sq. feet)



### First Floor

Approx. 39.1 sq. metres (421.1 sq. feet)



Call Canterbury - 01227 766669 ■ [wardsofkent.co.uk](http://wardsofkent.co.uk)

■ Legal advice should be taken to verify fixtures/fittings, planning, alterations and/or lease details  
 ■ Through a Homewise Home For Life Plan people aged 60+ can secure this property for up to 59% less, by purchasing a Lifetime Lease.

■ Appliances & services are untested, dimensions are approximate and floor plans are not to scale