



OVER 60?

Secure this property
for up to **59% less!**

Price

£320,000

Freehold

3x  1x  2x 

**Avon Close, Canterbury,
Kent, CT1**

Wards
Helping you move forwards



Main features

- **Modern detached chalet style home**
- **Ample parking to the front**
- **Private rear garden**
- **No onward chain**
- **Open plan kitchen/dining room, opening onto the garden**

Accommodation

GROUND FLOOR

Entrance Hallway
Cloak Room
Kitchen/Diner: 22'8 x 12'3 (6.91m x 3.74m)
Lounge: 15'5 x 12'1 (4.70m x 3.69m)

FIRST FLOOR

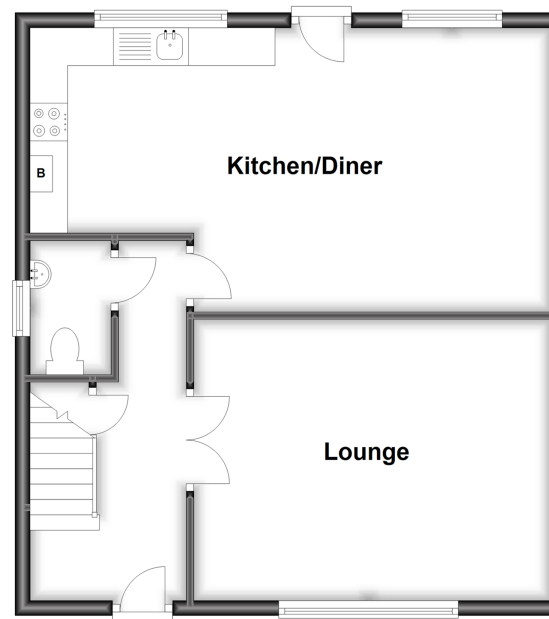
Landing
Bathroom: 8'9 x 6'9 (2.67m x 2.06m)
Bedroom 1: 13'5 x 10'1 (4.09m x 3.08m)
Bedroom 3: 9'9 x 9'5 (2.97m x 2.87m)
Bedroom 2: 10'2 x 9'2 (3.10m x 2.80m)

OUTSIDE

Driveway
Rear Garden

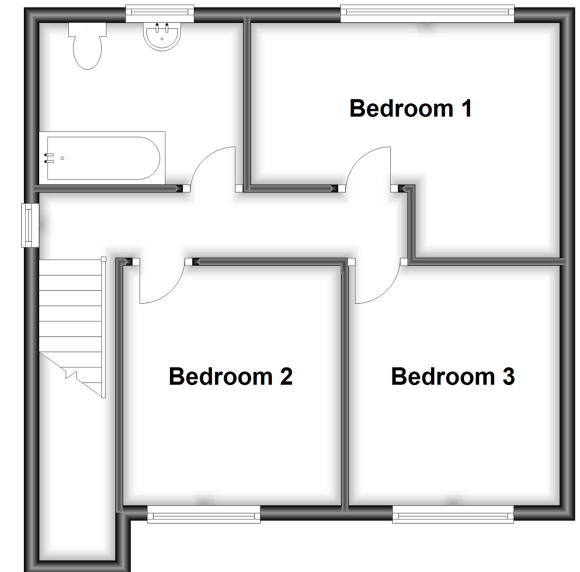
Ground Floor

Approx. 52.6 sq. metres (565.7 sq. feet)



First Floor

Approx. 45.1 sq. metres (484.9 sq. feet)



Call Canterbury - 01227 766669 ■ wardsofKent.co.uk

- Legal advice should be taken to verify fixtures/fittings, planning, alterations and/or lease details
- Through a Homewise Home For Life Plan people aged 60+ can secure this property for up to 59% less, by purchasing a Lifetime Lease.

- Appliances & services are untested, dimensions are approximate and floor plans are not to scale