



OVER 60?

Secure this property
for up to **59% less!**

Price
£350,000

Freehold

5x  2x  2x 

**Norman Road,
Canterbury, Kent, CT1**

Wards
Helping you move forwards



Main features

- Victorian home with bay windows and period features
- Offered with no onward chain
- Set across 3 floors, perfect for a family or HMO
- A short walk into the city centre and to the train station
- Easy on road parking with zonal permits and a large rear garden

Accommodation

GROUND FLOOR

Entrance Hallway
Lounge: 11'5 x 10'4 (3.48m x 3.15m)
Shower Room
Dining Room: 13'5 x 11'6 (4.09m x 3.51m)
Kitchen/Breakfast Room: 17'4 x 9'3 (5.29m x 2.82m)

FIRST FLOOR

Landing
Bedroom 1: 14'9 x 11'2 (4.50m x 3.41m)
Bedroom 2: 9'7 x 9'3 (2.92m x 2.82m)
Bedroom 3: 11'1 x 7'5 (3.38m x 2.26m)
Bathroom

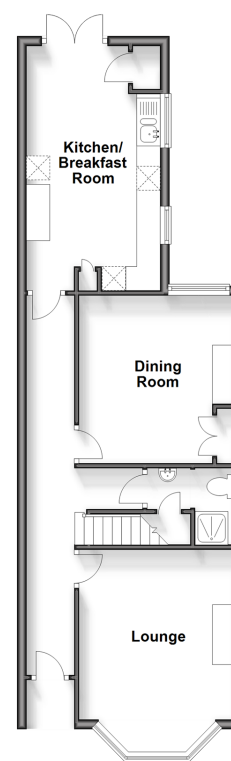
SECOND FLOOR

Landing
Bedroom 4: 11'2 x 8'7 (3.41m x 2.62m)
Bedroom 5: 15'4 x 5'9 (4.68m x 1.75m)

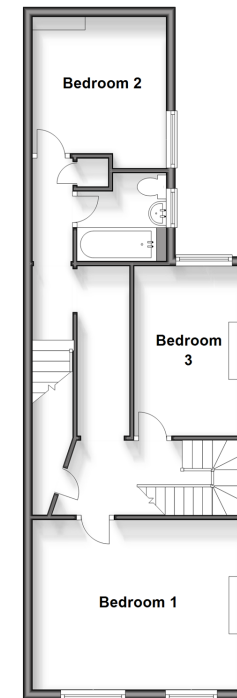
OUTSIDE

Front Garden
Rear Garden

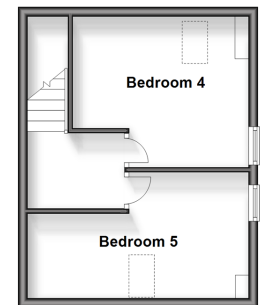
Ground Floor
Approx. 53.9 sq. metres (579.7 sq. feet)



First Floor
Approx. 54.5 sq. metres (586.5 sq. feet)



Second Floor
Approx. 27.8 sq. metres (299.0 sq. feet)



Call Canterbury - 01227 766669 ■ wardsofkent.co.uk

■ Legal advice should be taken to verify fixtures/fittings, planning, alterations and/or lease details
■ Through a Homewise Home For Life Plan people aged 60+ can secure this property for up to 59% less, by purchasing a Lifetime Lease.

■ Appliances & services are untested, dimensions are approximate and floor plans are not to scale



10347946/20240307/MWI/MWI