



Price
£525,000

Freehold

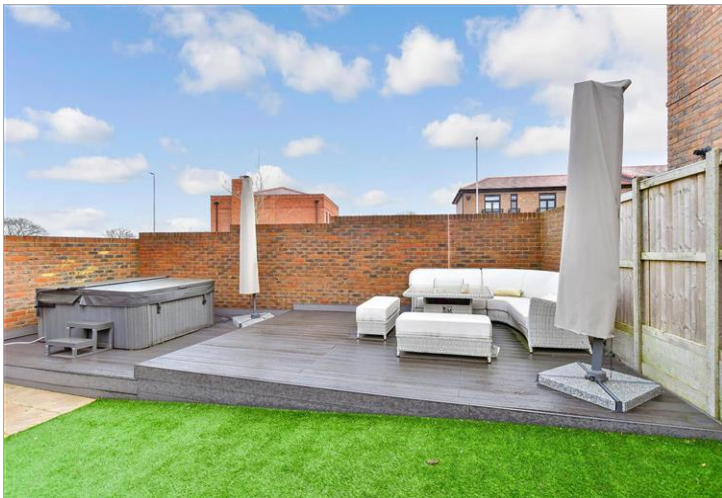
3x  3x  1x 

**Broadbank Way,
Canterbury, Kent, CT1**

OVER 60?

Secure this property
for up to **59% less!**

Wards
Helping you move forwards



Main features

- **Garage with electric door and driveway for 2 cars**
- **3 en suites and a dressing area**
- **Landscaped rear garden**
- **Amazing views of the Historic Canterbury Cathedral and city centre**
- **Walking distance to a local supermarket and park and ride bus service**

Accommodation

GROUND FLOOR

Entrance Porch
Entrance Hallway
Cloakroom
Kitchen/Diner: 26'3 x 11'6 (8.01m x 3.51m)
Lounge: 15'9 x 14'3 (4.80m x 4.35m)

FIRST FLOOR

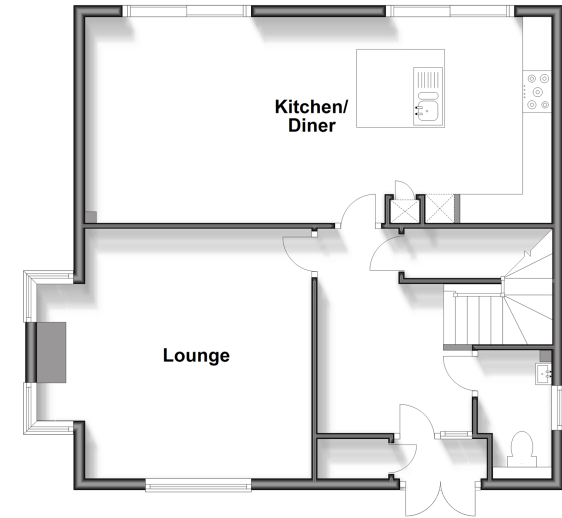
Landing
Bedroom 1: 11'8 x 10'4 (3.56m x 3.15m)
Dressing Area
En Suite Bathroom
Bedroom 2: 16'6 x 10'9 (5.03m x 3.28m)
En Suite Shower Room
Bedroom 3: 12'2 x 8'8 (3.71m x 2.64m)
En Suite Shower Room

OUTSIDE

Front Garden
Driveway
Garage
Rear Garden

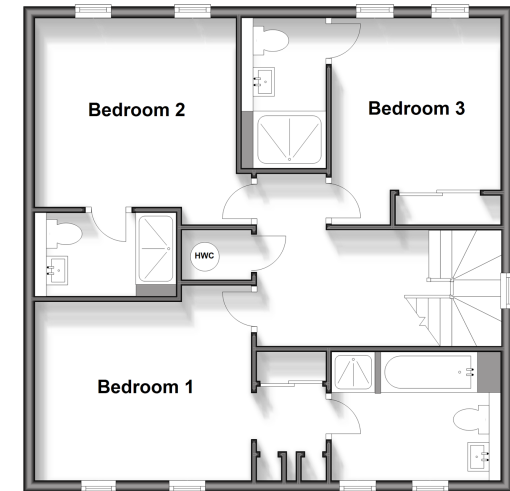
Ground Floor

Approx. 66.8 sq. metres (718.6 sq. feet)



First Floor

Approx. 64.8 sq. metres (697.3 sq. feet)



Call Canterbury - 01227 766669 ■ wardsofkent.co.uk

- Legal advice should be taken to verify fixtures/fittings, planning, alterations and/or lease details
- Appliances & services are untested, dimensions are approximate and floor plans are not to scale
- Through a Homewise Home For Life Plan people aged 60+ can secure this property for up to 59% less, by purchasing a Lifetime Lease.



10347953/20240409/MW/MW